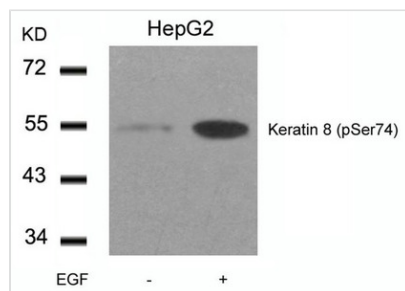




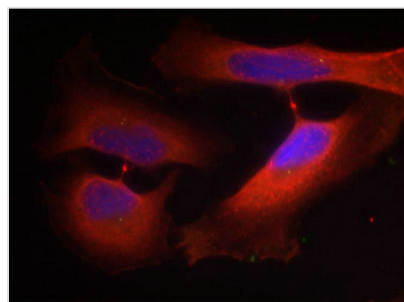
Phospho-KRT8 (Ser74) Antibody

Product Code	CSB-PA091792
Storage	Upon receipt, store at -20°C or -80°C. Avoid repeated freeze.
Uniprot No.	P05787
Immunogen	Peptide sequence around phosphorylation site of serine 74 (L-L-S(p)-P-L) derived from Human Keratin 8 (CK8).
Raised In	Rabbit
Species Reactivity	Human
Specificity	The antibody detects endogenous level of Keratin 8 only when phosphorylated at serine 74.
Tested Applications	ELISA,WB,IF;WB:1:500-1:1000,IF:1:100-1:200
Form	Supplied at 1.0mg/mL in phosphate buffered saline (without Mg2+ and Ca2+), pH 7.4, 150mM NaCl, 0.02% sodium azide and 50% glycerol.
Purification Method	Antibodies were produced by immunizing rabbits with synthetic phosphopeptide and KLH conjugates. Antibodies were purified by affinity-chromatography using epitope-specific phosphopeptide. Non-phospho specific antibodies were removed by chromatography
Clonality	Polyclonal
Alias	CK 8; CK8; CYK8; Cytokeratin endo A; K8
Product Type	Polyclonal Antibody
Immunogen Species	Homo sapiens (Human)
Target Names	KRT8

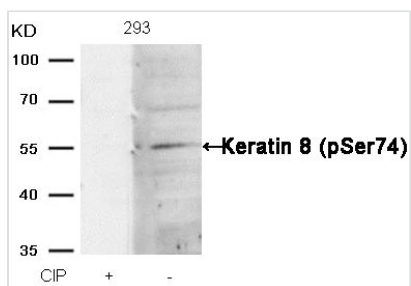
Image



Western blot analysis of extracts from HepG2 cells untreated or treated with EGF using Keratin 8(Phospho-Ser74) Antibody.



Immunofluorescence staining of methanol-fixed HeLa cells using Keratin 8(Phospho-Ser74) Antibody.



Western blot analysis of extracts from 293 cells, treated with calf intestinal phosphatase (CIP), using Keratin 8 (Phospho-Ser74) Antibody.

Product Modify

Phospho-Ser74