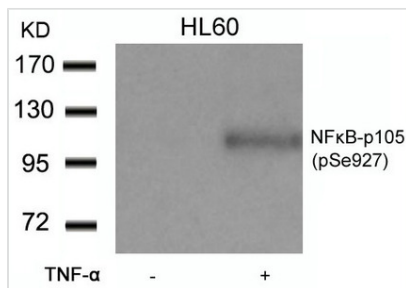




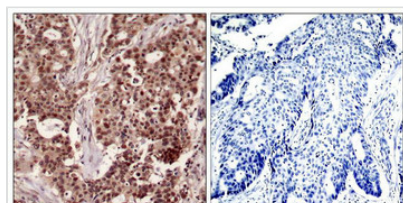
Phospho-NFKB1 (Ser927) Antibody

Product Code	CSB-PA283590
Storage	Upon receipt, store at -20°C or -80°C. Avoid repeated freeze.
Uniprot No.	P19838
Immunogen	Peptide sequence around phosphorylation site of serine 927 (C-D-S(p)-G-V) derived from Human NFkB-p105.
Raised In	Rabbit
Species Reactivity	Human,Mouse,Rat
Specificity	The antibody detects endogenous level of NFkB-p105 only when phosphorylated at serine 927.
Tested Applications	ELISA,WB,IHC,IF;WB:1:500-1:1000,IHC:1:50-1:100,IF:1:100-1:200
Form	Supplied at 1.0mg/mL in phosphate buffered saline (without Mg ²⁺ and Ca ²⁺), pH 7.4, 150mM NaCl, 0.02% sodium azide and 50% glycerol.
Purification Method	Antibodies were produced by immunizing rabbits with synthetic phosphopeptide and KLH conjugates. Antibodies were purified by affinity-chromatography using epitope-specific phosphopeptide. Non-phospho specific antibodies were removed by chromatography usi
Clonality	Polyclonal
Alias	DNA-binding factor KBF1; EBP-1; NF-kappa-B1 p84/NF-kappa-B1 p98; NFKB1; NFkB-p50
Product Type	Polyclonal Antibody
Immunogen Species	Homo sapiens (Human)
Target Names	NFKB1

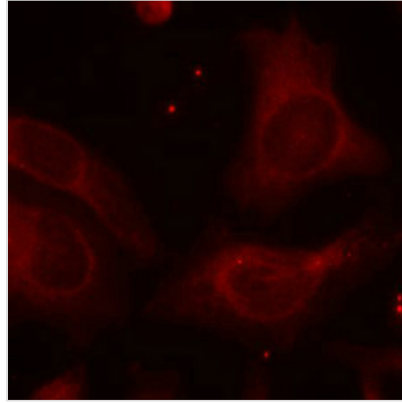
Image



Western blot analysis of extracts from HL60 cells untreated or treated with TNF- α using NFkB-p105(Phospho-Ser927) Antibody.



Immunohistochemical analysis of paraffin-embedded human breast carcinoma tissue using NFkB-p105(Phospho-Ser927) Antibody(left) or the same antibody preincubated with blocking peptide(right).



Immunofluorescence staining of methanol-fixed HeLa cells using NFkB-p105(Phospho-Ser927) Antibody.

Product Modify

Phospho-Ser927

Usage

For Research Use Only. Not for use in diagnostic or therapeutic procedures.