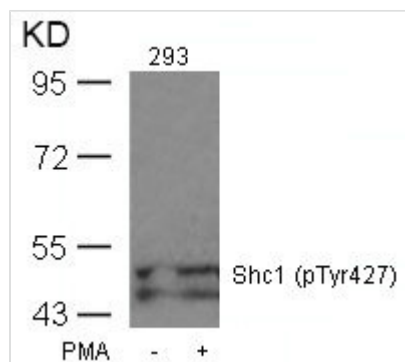




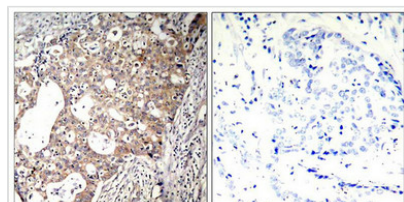
# Phospho-SHC1 (Tyr427) Antibody

<b>Product Code</b>	CSB-PA216875
<b>Storage</b>	Upon receipt, store at -20°C or -80°C. Avoid repeated freeze.
<b>Uniprot No.</b>	P29353
<b>Immunogen</b>	Peptide sequence around phosphorylation site of tyrosine 427 (P-S-Y(p)-V-N derived from Human Shc1.
<b>Raised In</b>	Rabbit
<b>Species Reactivity</b>	Human,Mouse,Rat
<b>Specificity</b>	The antibody detects endogenous level of Shc1 only when phosphorylated at tyrosine 427.
<b>Tested Applications</b>	ELISA,WB,IHC,IF;WB:1:500-1:1000,IHC:1:50-1:100,IF:1:100-1:200
<b>Form</b>	Supplied at 1.0mg/mL in phosphate buffered saline (without Mg2+ and Ca2+), pH 7.4, 150mM NaCl, 0.02% sodium azide and 50% glycerol.
<b>Purification Method</b>	Antibodies were produced by immunizing rabbits with synthetic phosphopeptide and KLH conjugates. Antibodies were purified by affinity-chromatography using epitope-specific phosphopeptide. Non-phospho specific antibodies were removed by chromatography
<b>Clonality</b>	Polyclonal
<b>Alias</b>	SH2 domain protein C1; SHC; SHC-transforming protein 1; SHCA; Src homology 2 domain-containing-transforming protein C1
<b>Product Type</b>	Polyclonal Antibody
<b>Immunogen Species</b>	Homo sapiens (Human)
<b>Target Names</b>	SHC1

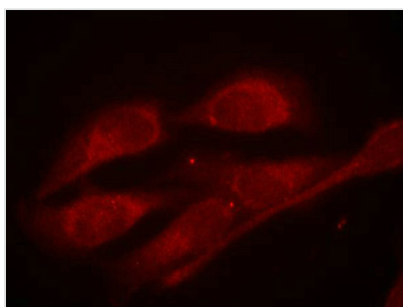
## Image



Western blot analysis of extracts from 293 cells untreated or treated with PMA using Shc1(Phospho-Tyr427) Antibody.



Immunohistochemical analysis of paraffin-embedded human breast carcinoma tissue using Shc1(Phospho-Tyr427) Antibody (left) or the same antibody preincubated with blocking peptide (right).



Immunofluorescence staining of methanol-fixed Hela cells using Shc1(Phospho-Tyr427) Antibody.

---

**Product Modify****Phospho-Tyr427**