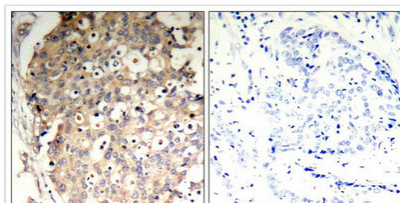




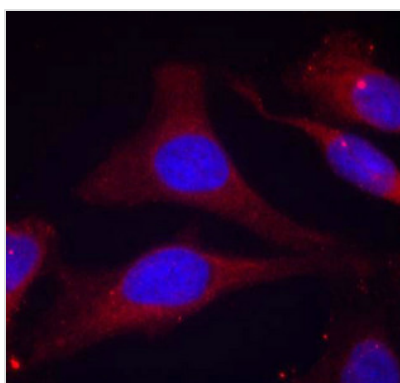
Phospho-PTPN6 (Tyr536) Antibody

Product Code	CSB-PA562160
Storage	Upon receipt, store at -20°C or -80°C. Avoid repeated freeze.
Uniprot No.	P29350
Immunogen	Peptide sequence around phosphorylation site of tyrosine 536 (S-E-Y(p)-G-N) derived from Human SHP-1.
Raised In	Rabbit
Species Reactivity	Human,Mouse,Rat
Specificity	The antibody detects endogenous level of SHP-1 only when phosphorylated at tyrosine 536.
Tested Applications	ELISA,IHC,IF;IHC:1:50-1:100,IF:1:100-1:200
Form	Supplied at 1.0mg/mL in phosphate buffered saline (without Mg ²⁺ and Ca ²⁺), pH 7.4, 150mM NaCl, 0.02% sodium azide and 50% glycerol.
Purification Method	Antibodies were produced by immunizing rabbits with synthetic phosphopeptide and KLH conjugates. Antibodies were purified by affinity-chromatography using epitope-specific phosphopeptide. Non-phospho specific antibodies were removed by chromatography
Clonality	Polyclonal
Alias	70Z-SHP; HCP; HCPH; Hematopoietic cell protein-tyrosine phosphatase; PTPN6
Product Type	Polyclonal Antibody
Immunogen Species	Homo sapiens (Human)
Target Names	PTPN6

Image



Immunohistochemical analysis of paraffin-embedded human breast carcinoma tissue using SHP-1(Phospho-Tyr536) Antibody(left) or the same antibody preincubated with blocking peptide(right).



Immunofluorescence staining of methanol-fixed HeLa cells using SHP-1(Phospho-Tyr536) Antibody.



Product Modify

Phospho-Tyr536

Usage

For Research Use Only. Not for use in diagnostic or therapeutic procedures.