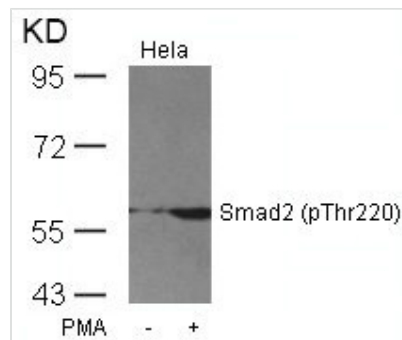




Phospho-SMAD2 (Thr220) Antibody

Product Code	CSB-PA084599
Storage	Upon receipt, store at -20°C or -80°C. Avoid repeated freeze.
Uniprot No.	Q15796
Immunogen	Peptide sequence around phosphorylation site of threonine 220 (P-E-T(p)-P-P) derived from Human Smad2.
Raised In	Rabbit
Species Reactivity	Human,Mouse,Rat
Specificity	The antibody detects endogenous level of Smad2 only when phosphorylated at threonine 220.
Tested Applications	ELISA,WB;WB:1:500-1:1000
Form	Supplied at 1.0mg/mL in phosphate buffered saline (without Mg ²⁺ and Ca ²⁺), pH 7.4, 150mM NaCl, 0.02% sodium azide and 50% glycerol.
Purification Method	Antibodies were produced by immunizing rabbits with synthetic phosphopeptide and KLH conjugates. Antibodies were purified by affinity-chromatography using epitope-specific phosphopeptide. Non-phospho specific antibodies were removed by chromatography usi
Clonality	Polyclonal
Alias	JV18-1; MADH2; MADR2; Mad-related protein 2; Mothers against DPP homolog 2
Product Type	Polyclonal Antibody
Immunogen Species	Homo sapiens (Human)
Target Names	SMAD2

Image



Western blot analysis of extracts from HeLa cells untreated or treated with PMA using Smad2(Phospho-Thr220) Antibody.

Product Modify	Phospho-Thr220
Usage	For Research Use Only. Not for use in diagnostic or therapeutic procedures.