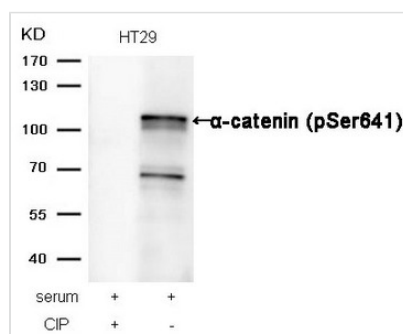
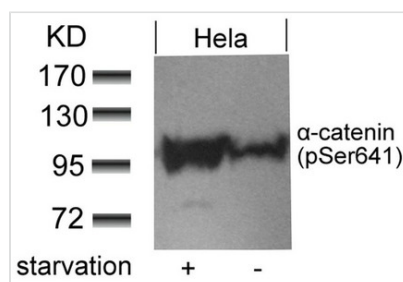




Phospho-CTNNA1 (Ser641) Antibody

Product Code	CSB-PA596605
Storage	Upon receipt, store at -20°C or -80°C. Avoid repeated freeze.
Uniprot No.	P35221
Immunogen	Peptide sequence around phosphorylation site of serine 641 (D-D-S(p)-D-F) derived from Human α -catenin.
Raised In	Rabbit
Species Reactivity	Human, Mouse
Specificity	The antibody detects endogenous level of α -catenin only when phosphorylated at serine 641.
Tested Applications	ELISA, WB; WB: 1:500-1:1000
Form	Supplied at 1.0mg/mL in phosphate buffered saline (without Mg ²⁺ and Ca ²⁺), pH 7.4, 150mM NaCl, 0.02% sodium azide and 50% glycerol.
Purification Method	Antibodies were produced by immunizing rabbits with synthetic phosphopeptide and KLH conjugates. Antibodies were purified by affinity-chromatography using epitope-specific phosphopeptide. Non-phospho specific antibodies were removed by chromatography using
Clonality	Polyclonal
Alias	Cadherin-associated protein; Alpha E-catenin; NY-REN-13 antigen
Product Type	Polyclonal Antibody
Immunogen Species	Homo sapiens (Human)
Target Names	CTNNA1

Image





Product Modify**Phospho-Ser641**