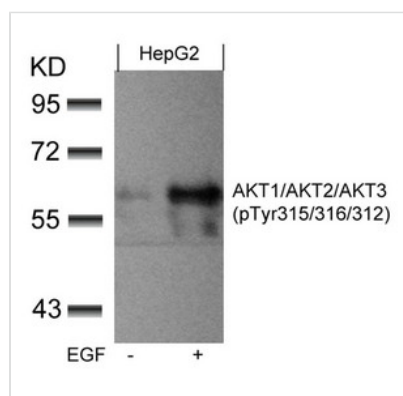




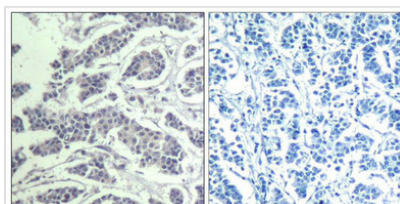
Phospho-AKT1/AKT2/AKT3 (Tyr315/316/312) Antibody

Product Code	CSB-PA569237
Storage	Upon receipt, store at -20°C or -80°C. Avoid repeated freeze.
Uniprot No.	P31749/P31751/Q9Y243
Immunogen	Peptide sequence around phosphorylation site of tyrosine 315/316/312 (P-E-Y(p)-L-A) derived from Human AKT1/AKT2/AKT3.
Raised In	Rabbit
Species Reactivity	Human,Mouse,Rat
Specificity	The antibody detects endogenous level of AKT1/AKT2/AKT3 only when phosphorylated at tyrosine 315/316/312.
Tested Applications	ELISA,WB,IHC,IF;WB:1:500-1:1000,IHC:1:50-1:100,IF:1:100-1:200
Form	Supplied at 1.0mg/mL in phosphate buffered saline (without Mg ²⁺ and Ca ²⁺), pH 7.4, 150mM NaCl, 0.02% sodium azide and 50% glycerol.
Purification Method	Antibodies were produced by immunizing rabbits with synthetic phosphopeptide and KLH conjugates. Antibodies were purified by affinity-chromatography using epitope-specific phosphopeptide. Non-phospho specific antibodies were removed by chromatography
Clonality	Polyclonal
Alias	RAC-PK-alpha; Protein kinase B;
Product Type	Polyclonal Antibody
Immunogen Species	Homo sapiens (Human)
Target Names	AKT1/AKT2/AKT3

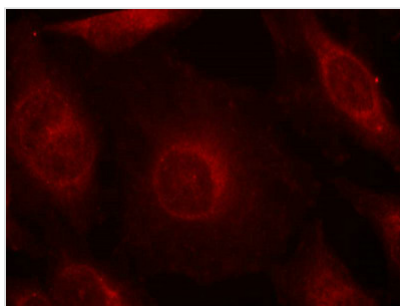
Image



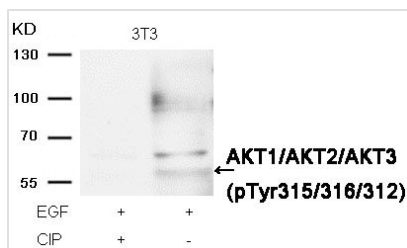
Western blot analysis of extracts from HepG2 cells untreated or treated with EGF using AKT1/AKT2/AKT3(phospho-Tyr315/316/312) Antibody.



Immunohistochemical analysis of paraffin-embedded human breast carcinoma tissue using AKT1/AKT2/AKT3(Phospho-Tyr315/316/312) Antibody(left) or the same antibody preincubated with blocking peptide(right).



Immunofluorescence staining of methanol-fixed HeLa cells using AKT1/AKT2/AKT3(phospho-Tyr315/316/312) Antibody.



Western blot analysis of extracts from 3T3 cells, treated with EGF or calf intestinal phosphatase (CIP), using AKT1/AKT2/AKT3 (phospho-Tyr315/316/312) Antibody.

Product Modify

Phospho-Tyr315/316/312

Usage

For Research Use Only. Not for use in diagnostic or therapeutic procedures.