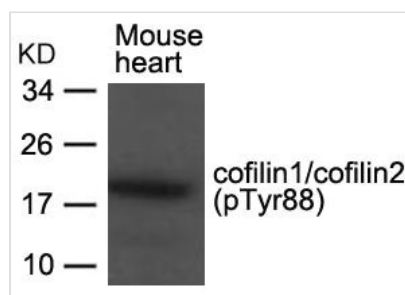




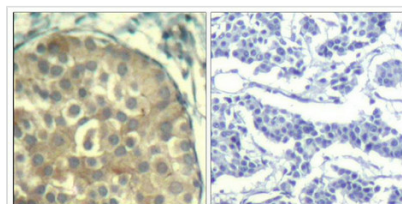
Phospho-CFL1/CFL2 (Tyr88) Antibody

Product Code	CSB-PA091613
Storage	Upon receipt, store at -20°C or -80°C. Avoid repeated freeze.
Uniprot No.	P23528/Q9Y281
Immunogen	Peptide sequence around phosphorylation site of tyrosine 88 (A-T-Y(p)-E-T) derived from Human cofilin1/cofilin2.
Raised In	Rabbit
Species Reactivity	Human,Mouse
Specificity	The antibody detects endogenous level of cofilin1/cofilin2 only when phosphorylated at tyrosine 88.
Tested Applications	ELISA,WB,IHC;WB:1:500-1:1000,IHC:1:50-1:100
Form	Supplied at 1.0mg/mL in phosphate buffered saline (without Mg ²⁺ and Ca ²⁺), pH 7.4, 150mM NaCl, 0.02% sodium azide and 50% glycerol.
Purification Method	Antibodies were produced by immunizing rabbits with synthetic phosphopeptide and KLH conjugates. Antibodies were purified by affinity-chromatography using epitope-specific phosphopeptide. Non-phospho specific antibodies were removed by chromatography
Clonality	Polyclonal
Alias	CFL1/CFL2
Product Type	Polyclonal Antibody
Immunogen Species	Homo sapiens (Human)
Target Names	CFL1/CFL2

Image



Western blot analysis of extracts from Mouse heart tissue using cofilin1/cofilin2(phospho-Tyr88) Antibody.



Immunohistochemical analysis of paraffin-embedded human breast carcinoma tissue using cofilin1/cofilin2(Phospho-Tyr88) Antibody(left) or the same antibody preincubated with blocking peptide(right).

Product Modify Phospho-Tyr88