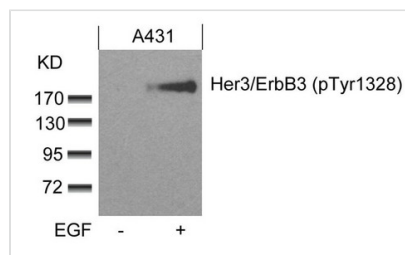




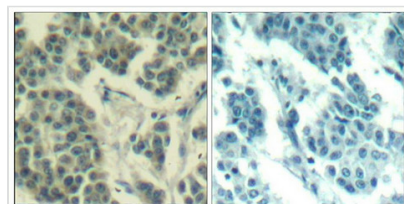
Phospho-ERBB3 (Tyr1328) Antibody

Product Code	CSB-PA824036
Storage	Upon receipt, store at -20°C or -80°C. Avoid repeated freeze.
Uniprot No.	P21860
Immunogen	Peptide sequence around phosphorylation site of tyrosine 1328 (P-D-Y(p)-W-H) derived from Human Her3/ErbB3.
Raised In	Rabbit
Species Reactivity	Human,Mouse,Rat
Specificity	The antibody detects endogenous level of Her3/ErbB3 only when phosphorylated at tyrosine 1328.
Tested Applications	ELISA,WB,IHC,IF;WB:1:500-1:1000,IHC:1:50-1:100,IF:1:100-1:200
Form	Supplied at 1.0mg/mL in phosphate buffered saline (without Mg2+ and Ca2+), pH 7.4, 150mM NaCl, 0.02% sodium azide and 50% glycerol.
Purification Method	Antibodies were produced by immunizing rabbits with synthetic phosphopeptide and KLH conjugates. Antibodies were purified by affinity-chromatography using epitope-specific phosphopeptide. Non-phospho specific antibodies were removed by chromatography usi
Clonality	Polyclonal
Alias	Tyrosine kinase-type cell surface receptor HER3
Product Type	Polyclonal Antibody
Immunogen Species	Homo sapiens (Human)
Target Names	ERBB3

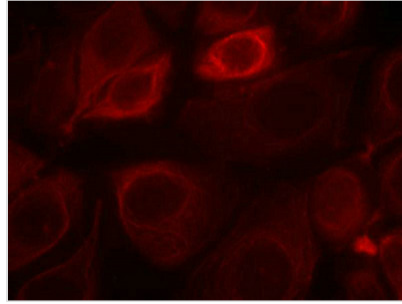
Image



Western blot analysis of extracts from A431 cells untreated or treated with EGF using Her3/ErbB3(phospho-Tyr1328) Antibody.



Immunohistochemical analysis of paraffin-embedded human breast carcinoma tissue using Her3/ErbB3(Phospho-Tyr1328) Antibody(left) or the same antibody preincubated with blocking peptide(right).



Immunofluorescence staining of methanol-fixed MCF7 cells using Her3/ErbB3(phospho-Tyr1328) Antibody.

Product Modify

Phospho-Tyr1328

Usage

For Research Use Only. Not for use in diagnostic or therapeutic procedures.