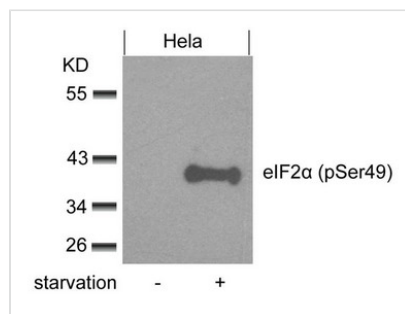




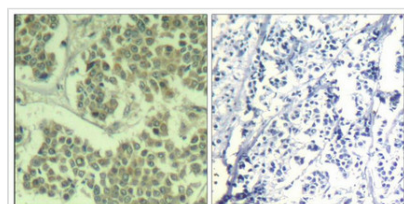
Phospho-EIF2S1 (Ser49) Antibody

Product Code	CSB-PA279986
Storage	Upon receipt, store at -20°C or -80°C. Avoid repeated freeze.
Uniprot No.	P05198
Immunogen	Peptide sequence around phosphorylation site of Serine 49 (L-L-S(p)-E-L) derived from Human eIF2a.
Raised In	Rabbit
Species Reactivity	Human,Mouse,Rat
Specificity	The antibody detects endogenous level of eIF2a only when phosphorylated at Serine 49.
Tested Applications	ELISA,WB,IHC,IF;WB:1:500-1:1000,IHC:1:50-1:100,IF:1:100-1:200
Form	Supplied at 1.0mg/mL in phosphate buffered saline (without Mg ²⁺ and Ca ²⁺), pH 7.4, 150mM NaCl, 0.02% sodium azide and 50% glycerol.
Purification Method	Antibodies were produced by immunizing rabbits with synthetic phosphopeptide and KLH conjugates. Antibodies were purified by affinity-chromatography using epitope-specific phosphopeptide. Non-phospho specific antibodies were removed by chromatography usi
Clonality	Polyclonal
Alias	Eukaryotic translation initiation factor 2 subunit alpha
Product Type	Polyclonal Antibody
Immunogen Species	Homo sapiens (Human)
Target Names	EIF2S1

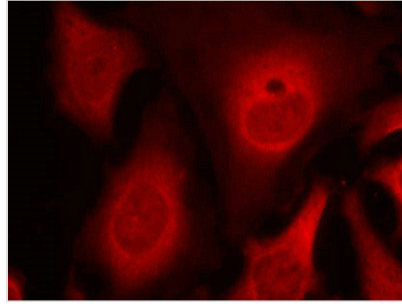
Image



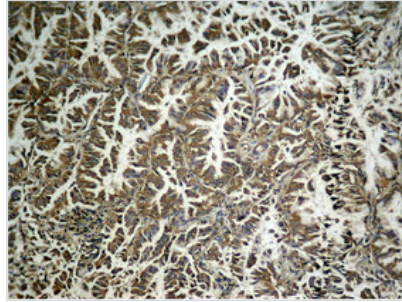
Western blot analysis of extracts from HeLa cells untreated or treated with starvation using eIF2a(phospho-Ser49) Antibody.



Immunohistochemical analysis of paraffin-embedded human breast carcinoma tissue using eIF2α (Phospho-Ser49) Antibody (left) or the same antibody preincubated with blocking peptide (right).



Immunofluorescence staining of methanol-fixed HeLa cells using eIF2 α (phospho-Ser49) Antibody.



Immunohistochemical analysis of paraffin-embedded human lung carcinoma tissue, using eIF2 α (Phospho-Ser49) Antibody.

Product Modify

Phospho-Ser49

Usage

For Research Use Only. Not for use in diagnostic or therapeutic procedures.