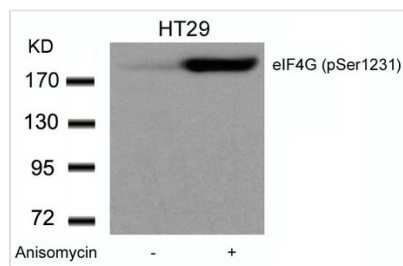




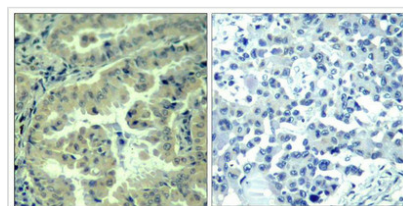
Phospho-EIF4G1 (Ser1232) Antibody

Product Code	CSB-PA987086
Storage	Upon receipt, store at -20°C or -80°C. Avoid repeated freeze.
Uniprot No.	Q04637
Immunogen	Peptide sequence around phosphorylation site of serine 1232 (P-V-S(p)-P-L) derived from Human eIF4G.
Raised In	Rabbit
Species Reactivity	Human
Specificity	The antibody detects endogenous level of eIF4G only when phosphorylated at serine 1232.
Tested Applications	ELISA,WB,IHC;WB:1:500-1:1000,IHC:1:50-1:100
Form	Supplied at 1.0mg/mL in phosphate buffered saline (without Mg ²⁺ and Ca ²⁺), pH 7.4, 150mM NaCl, 0.02% sodium azide and 50% glycerol.
Purification Method	Antibodies were produced by immunizing rabbits with synthetic phosphopeptide and KLH conjugates. Antibodies were purified by affinity-chromatography using epitope-specific phosphopeptide. Non-phospho specific antibodies were removed by chromatography
Clonality	Polyclonal
Product Type	Polyclonal Antibody
Immunogen Species	Homo sapiens (Human)
Target Names	EIF4G1

Image



Western blot analysis of extracts from HT29 cells untreated or treated with Anisomycin using eIF4G (phospho-Ser1231) Antibody.



Immunohistochemical analysis of paraffin-embedded human lung carcinoma tissue using eIF4G(Phospho-Ser1232) Antibody(left) or the same antibody preincubated with blocking peptide(right).

Product Modify	Phospho-Ser1232
Usage	For Research Use Only. Not for use in diagnostic or therapeutic procedures.