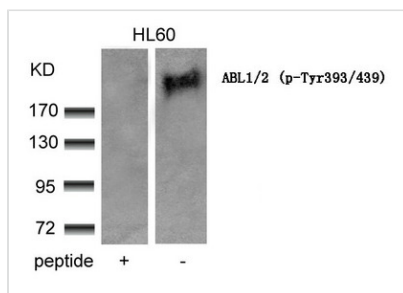




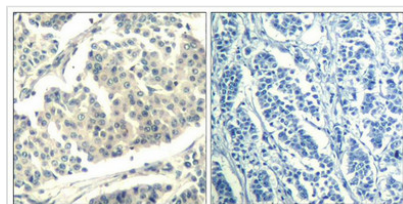
# Phospho-ABL1/ABL2 (Tyr393/439) Antibody

|                            |  |
|----------------------------|--|
| <b>Product Code</b>        | CSB-PA565211   |
| <b>Storage</b>             | Upon receipt, store at -20°C or -80°C. Avoid repeated freeze.  |
| <b>Uniprot No.</b>         | P00519/P42684  |
| <b>Immunogen</b>           | Peptide sequence around phosphorylation site of tyrosine 393/439 (D-T-Y(p)-T-A) derived from Human ABL1/2.   |
| <b>Raised In</b>           | Rabbit   |
| <b>Species Reactivity</b>  | Human,Mouse  |
| <b>Specificity</b>         | The antibody detects endogenous level of ABL1/2 only when phosphorylated at tyrosine393/439.   |
| <b>Tested Applications</b> | ELISA,WB,IHC,IF;WB:1:500-1:1000,IHC:1:50-1:100,IF:1:100-1:200  |
| <b>Form</b>                | Supplied at 1.0mg/mL in phosphate buffered saline (without Mg <sup>2+</sup> and Ca <sup>2+</sup> ), pH 7.4, 150mM NaCl, 0.02% sodium azide and 50% glycerol.   |
| <b>Purification Method</b> | Antibodies were produced by immunizing rabbits with synthetic phosphopeptide and KLH conjugates. Antibodies were purified by affinity-chromatography using epitope-specific phosphopeptide. Non-phospho specific antibodies were removed by chromatography usi |
| <b>Clonality</b>           | Polyclonal   |
| <b>Alias</b>               | Abelson murine leukemia viral oncogene homolog 1; c-ABL; p150  |
| <b>Product Type</b>        | Polyclonal Antibody  |
| <b>Immunogen Species</b>   | Homo sapiens (Human)   |
| <b>Target Names</b>        | ABL1/ABL2  |

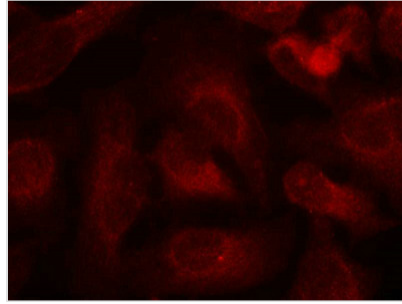
## Image



Western blot analysis of extracts from HL60 cells using ABL1/2(phospho-Tyr393/439) Antibody and the same antibody preincubated with blocking peptide.



Immunohistochemical analysis of paraffin-embedded human breast carcinoma tissue using ABL1/2(Phospho-Tyr393/439) Antibody(left) or the same antibody preincubated with blocking peptide(right).



Immunofluorescence staining of methanol-fixed HeLa cells using ABL1/2(phospho-Tyr393/439) Antibody.

---

**Product Modify**

Phospho-Tyr393/439

---

**Usage**

For Research Use Only. Not for use in diagnostic or therapeutic procedures.