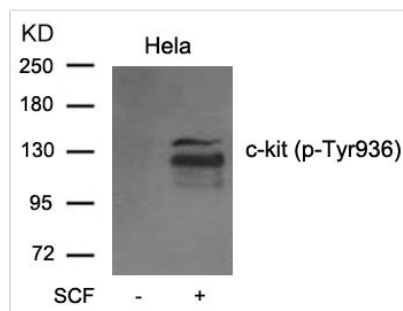




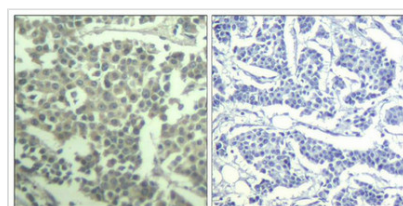
Phospho-KIT (Tyr936) Antibody

Product Code	CSB-PA437024
Storage	Upon receipt, store at -20°C or -80°C. Avoid repeated freeze.
Uniprot No.	P10721
Immunogen	Peptide sequence around phosphorylation site of tyrosine 936 (H-I-Y(p)-S-N) derived from Human c-Kit.
Raised In	Rabbit
Species Reactivity	Human
Specificity	The antibody detects endogenous level of c-kit only when phosphorylated at tyrosine 936.
Tested Applications	ELISA, WB, IHC; WB: 1:500-1:1000, IHC: 1:50-1:100
Form	Supplied at 1.0mg/mL in phosphate buffered saline (without Mg ²⁺ and Ca ²⁺), pH 7.4, 150mM NaCl, 0.02% sodium azide and 50% glycerol.
Purification Method	Antibodies were produced by immunizing rabbits with synthetic phosphopeptide and KLH conjugates. Antibodies were purified by affinity-chromatography using epitope-specific phosphopeptide. Non-phospho specific antibodies were removed by chromatography using
Clonality	Polyclonal
Alias	KIT; CD117; SCFR; PBT;
Product Type	Polyclonal Antibody
Immunogen Species	Homo sapiens (Human)
Target Names	KIT

Image



Western blot analysis of extracts from C6 cell untreated or treated with serum using c-kit(phospho-Tyr936) Antibody.



Immunohistochemical analysis of paraffin-embedded human breast carcinoma tissue using c-kit(Phospho-Tyr936) Antibody(left) or the same antibody preincubated with blocking peptide(right).

Product Modify Phospho-Tyr936