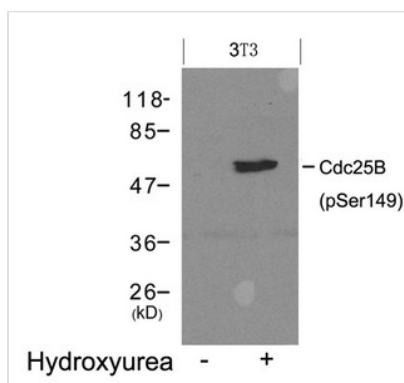




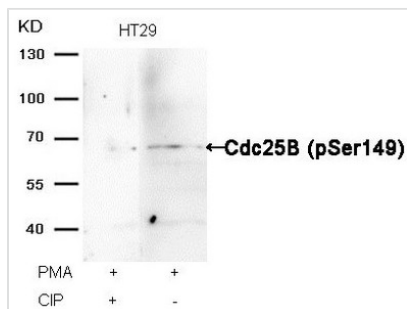
# Phospho-Cdc25b (Ser149) Antibody

<b>Product Code</b>	CSB-PA905252
<b>Storage</b>	Upon receipt, store at -20°C or -80°C. Avoid repeated freeze.
<b>Uniprot No.</b>	Q9DBN8
<b>Immunogen</b>	Peptide sequence around phosphorylation site of Serine 149 (F-R-S(p)-L-P) derived from Mouse Cdc25B.
<b>Raised In</b>	Rabbit
<b>Species Reactivity</b>	Mouse,Rat
<b>Specificity</b>	The antibody detects endogenous level of Cdc25B protein only when phosphorylated at serine 149.
<b>Tested Applications</b>	ELISA,WB;WB:1:500-1:1000
<b>Form</b>	Supplied at 1.0mg/mL in phosphate buffered saline (without Mg <sup>2+</sup> and Ca <sup>2+</sup> ), pH 7.4, 150mM NaCl, 0.02% sodium azide and 50% glycerol.
<b>Purification Method</b>	Antibodies were produced by immunizing rabbits with synthetic peptide and KLH conjugates. Antibodies were purified by affinity-chromatography using epitope-specific peptide.
<b>Clonality</b>	Polyclonal
<b>Alias</b>	CDC25B
<b>Product Type</b>	Polyclonal Antibody
<b>Immunogen Species</b>	Mus musculus (Mouse)
<b>Target Names</b>	Cdc25b

## Image



Western blot analysis of extracts from 3T3 cells untreated (lane 1) or treated with Hydroxyurea (lane 2) using Cdc25B(Phospho-Ser149) Antibody.



Western blot analysis of extracts from HT29 cells, treated with PMA or calf intestinal phosphatase (CIP), using Cdc25B (Phospho-Ser149) Antibody.

**Product Modify**

Phospho-Ser149

**Usage**

For Research Use Only. Not for use in diagnostic or therapeutic procedures.