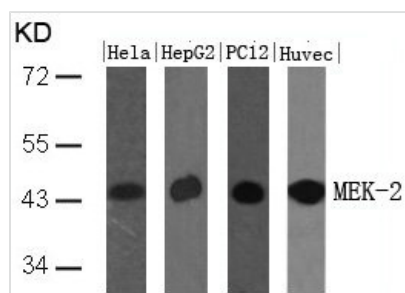




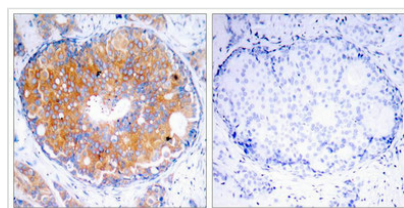
# MAP2K2 (Ab-394) Antibody

<b>Product Code</b>	CSB-PA898246
<b>Storage</b>	Upon receipt, store at -20°C or -80°C. Avoid repeated freeze.
<b>Uniprot No.</b>	P36507
<b>Immunogen</b>	Peptide sequence around aa.392~396 (P-G-T-P-T) derived from Human MEK-2.
<b>Raised In</b>	Rabbit
<b>Species Reactivity</b>	Human,Mouse,Rat
<b>Specificity</b>	The antibody detects endogenous level of total MEK2 protein.
<b>Tested Applications</b>	ELISA,WB,IHC;WB:1:500-1:1000,IHC:1:50-1:200
<b>Form</b>	Supplied at 1.0mg/mL in phosphate buffered saline (without Mg <sup>2+</sup> and Ca <sup>2+</sup> ), pH 7.4, 150mM NaCl, 0.02% sodium azide and 50% glycerol.
<b>Purification Method</b>	Antibodies were produced by immunizing rabbits with synthetic peptide and KLH conjugates. Antibodies were purified by affinity-chromatography using epitope-specific peptide.
<b>Clonality</b>	Polyclonal
<b>Alias</b>	ERK activator kinase 2; MAP kinase kinase 2; MAP2K2; MAPK/ERK kinase 2; MAPKK 2
<b>Product Type</b>	Polyclonal Antibody
<b>Immunogen Species</b>	Homo sapiens (Human)
<b>Target Names</b>	MAP2K2

## Image



Western blot analysis of extracts from HeLa, HepG2, PC12 and HUVEC cells using MEK-2(Ab-394) Antibody.



Immunohistochemical analysis of paraffin-embedded human breast carcinoma tissue using MEK-2(Ab-394) Antibody(left) or the same antibody preincubated with blocking peptide(right).

## Usage

For Research Use Only. Not for use in diagnostic or therapeutic procedures.