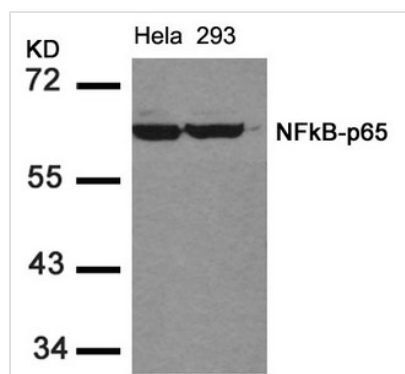




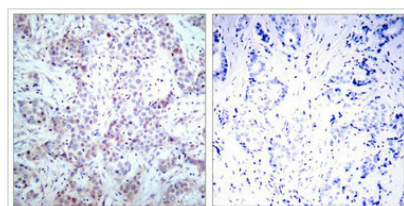
RELA (Ab-536) Antibody

Product Code	CSB-PA254436
Storage	Upon receipt, store at -20°C or -80°C. Avoid repeated freeze.
Uniprot No.	Q04206
Immunogen	Peptide sequence around aa.534~538 (F-S-S-I-A) derived from Human NFkB-p65.
Raised In	Rabbit
Species Reactivity	Human,Mouse,Rat
Specificity	The antibody detects endogenous level of total NFkB-p65 protein.
Tested Applications	ELISA,WB,IHC;WB:1:500-1:1000,IHC:1:50-1:200
Form	Supplied at 1.0mg/mL in phosphate buffered saline (without Mg2+ and Ca2+), pH 7.4, 150mM NaCl, 0.02% sodium azide and 50% glycerol.
Purification Method	Antibodies were produced by immunizing rabbits with synthetic peptide and KLH conjugates. Antibodies were purified by affinity-chromatography using epitope-specific peptide.
Clonality	Polyclonal
Alias	NFKB3; RELA; TF65; Transcription factor p65; p65
Product Type	Polyclonal Antibody
Immunogen Species	Homo sapiens (Human)
Target Names	RELA

Image



Western blot analysis of extracts from HeLa and 293 cells using NFkB-p65(Ab-536) Antibody.



Immunohistochemical analysis of paraffin-embedded human breast carcinoma tissue using NFkB-p65(Ab-536) Antibody (left) or the same antibody preincubated with blocking peptide (right).