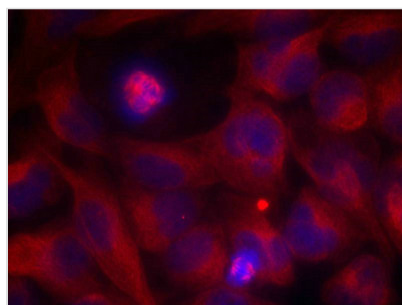




REL (Ab-503) Antibody

Product Code	CSB-PA194896
Storage	Upon receipt, store at -20°C or -80°C. Avoid repeated freeze.
Uniprot No.	Q04864
Immunogen	Peptide sequence around aa.501~505 (T-S-S-D-S) derived from Human Rel.
Raised In	Rabbit
Species Reactivity	Human
Specificity	The antibody detects endogenous level of total Rel protein.
Tested Applications	ELISA,IF;IF:1:100-1:200
Form	Supplied at 1.0mg/mL in phosphate buffered saline (without Mg ²⁺ and Ca ²⁺), pH 7.4, 150mM NaCl, 0.02% sodium azide and 50% glycerol.
Purification Method	Antibodies were produced by immunizing rabbits with synthetic peptide and KLH conjugates. Antibodies were purified by affinity-chromatography using epitope-specific peptide.
Clonality	Polyclonal
Alias	C-Rel
Product Type	Polyclonal Antibody
Immunogen Species	Homo sapiens (Human)
Target Names	REL

Image



Immunofluorescence staining of methanol-fixed HeLa cells using Rel(Ab-503) Antibody.

Usage For Research Use Only. Not for use in diagnostic or therapeutic procedures.