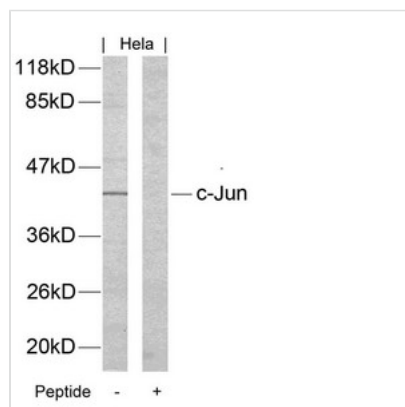




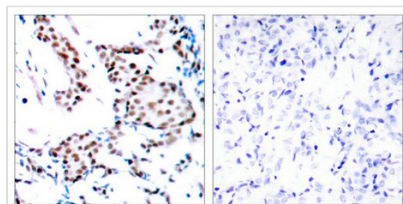
JUN (Ab-170) Antibody

Product Code	CSB-PA587026
Storage	Upon receipt, store at -20°C or -80°C. Avoid repeated freeze.
Uniprot No.	P05412
Immunogen	Peptide sequence around aa. 168~172 (P-V-Y-A-N) derived from Human c-Jun.
Raised In	Rabbit
Species Reactivity	Human,Mouse,Rat
Specificity	The antibody detects endogenous level of total c-Jun protein.
Tested Applications	ELISA,WB,IHC;WB:1:500-1:1000,IHC:1:50-1:200
Form	Supplied at 1.0mg/mL in phosphate buffered saline (without Mg ²⁺ and Ca ²⁺), pH 7.4, 150mM NaCl, 0.02% sodium azide and 50% glycerol.
Purification Method	Antibodies were produced by immunizing rabbits with synthetic peptide and KLH conjugates. Antibodies were purified by affinity-chromatography using epitope-specific peptide.
Clonality	Polyclonal
Alias	AH119; AP1; Jun A; c-Jun; p39
Product Type	Polyclonal Antibody
Immunogen Species	Homo sapiens (Human)
Target Names	JUN

Image



Western blot analysis of extracts from HeLa cells using c-Jun(Ab-170) Antibody and the same antibody preincubated with blocking peptide.



Immunohistochemical analysis of paraffin-embedded human breast carcinoma tissue using c-Jun(Ab-170) Antibody(left) or the same antibody preincubated with blocking peptide(right).

Usage

For Research Use Only. Not for use in diagnostic or therapeutic procedures.