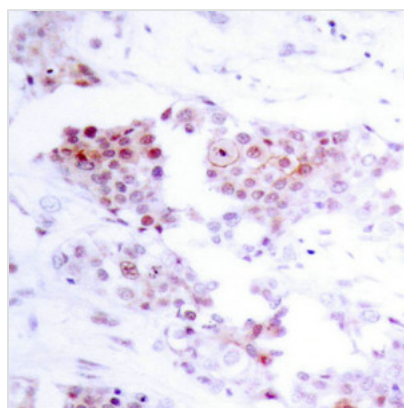




MEF2A (Ab-319) Antibody

Product Code	CSB-PA280396
Storage	Upon receipt, store at -20°C or -80°C. Avoid repeated freeze.
Uniprot No.	Q02078
Immunogen	Peptide sequence around aa.317~321 (V-T-T-P-S) derived from Human MEF2A.
Raised In	Rabbit
Species Reactivity	Human,Mouse,Rat
Specificity	The antibody detects endogenous level of total MEF2A protein.
Tested Applications	ELISA,IHC;IHC:1:50-1:100
Form	Supplied at 1.0mg/mL in phosphate buffered saline (without Mg ²⁺ and Ca ²⁺), pH 7.4, 150mM NaCl, 0.02% sodium azide and 50% glycerol.
Purification Method	Antibodies were produced by immunizing rabbits with synthetic peptide and KLH conjugates. Antibodies were purified by affinity-chromatography using epitope-specific peptide.
Clonality	Polyclonal
Alias	MEF2; Serum response factor-like protein 1;
Product Type	Polyclonal Antibody
Immunogen Species	Homo sapiens (Human)
Target Names	MEF2A

Image



Immunohistochemical analysis of paraffin-embedded human breast carcinoma tissue using MEF2A(Ab-319) Antibody

Usage For Research Use Only. Not for use in diagnostic or therapeutic procedures.