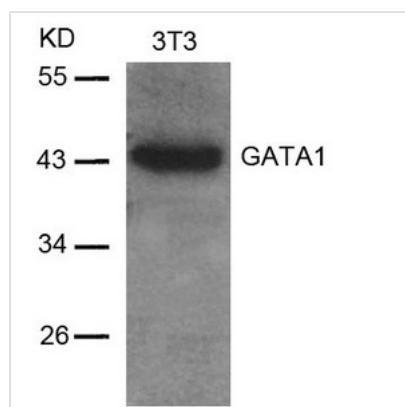




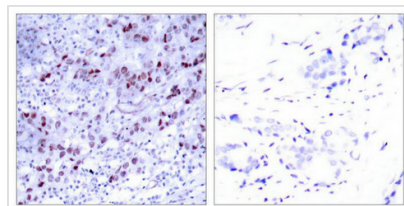
GATA1 (Ab-142) Antibody

Product Code	CSB-PA440674
Storage	Upon receipt, store at -20°C or -80°C. Avoid repeated freeze.
Uniprot No.	P15976
Immunogen	Peptide sequence around aa.140~144 (R-L-S-P-D) derived from Human GATA1.
Raised In	Rabbit
Species Reactivity	Human,Mouse,Rat
Specificity	The antibody detects endogenous level of total GATA1 protein.
Tested Applications	ELISA,WB,IHC,IF;WB:1:500-1:1000,IHC:1:50-1:200,IF:1:100-1:200
Form	Supplied at 1.0mg/mL in phosphate buffered saline (without Mg2+ and Ca2+), pH 7.4, 150mM NaCl, 0.02% sodium azide and 50% glycerol.
Purification Method	Antibodies were produced by immunizing rabbits with synthetic peptide and KLH conjugates. Antibodies were purified by affinity-chromatography using epitope-specific peptide.
Clonality	Polyclonal
Alias	GAT1; GATA1; GF-1; NF-E1;
Product Type	Polyclonal Antibody
Immunogen Species	Homo sapiens (Human)
Target Names	GATA1

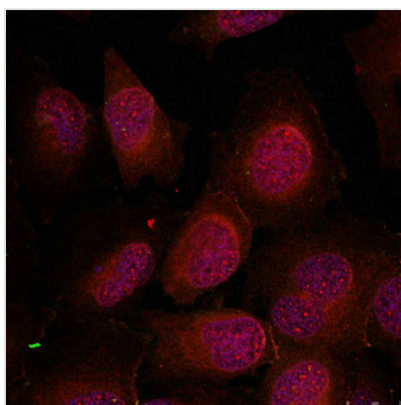
Image



Western blot analysis of extracts from 3T3 cells using GATA1 (Ab-142) Antibody.



Immunohistochemical analysis of paraffin-embedded human breast carcinoma tissue using GATA1 (Ab-142) Antibody (left) or the same antibody preincubated with blocking peptide (right).



Immunofluorescence staining of methanol-fixed HeLa cells using GATA1 (Ab-142) Antibody.