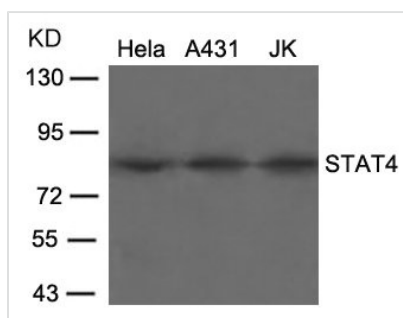




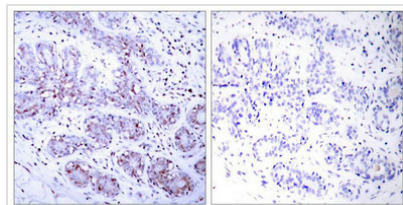
STAT4 (Ab-693) Antibody

Product Code	CSB-PA915871
Storage	Upon receipt, store at -20°C or -80°C. Avoid repeated freeze.
Uniprot No.	Q14765
Immunogen	Peptide sequence around aa.691~695 (K-G-Y-V-P) derived from Human STAT4.
Raised In	Rabbit
Species Reactivity	Human,Mouse,Rat
Specificity	The antibody detects endogenous level of total STAT4 protein.
Tested Applications	ELISA,WB,IHC;WB:1:500-1:1000,IHC:1:50-1:200
Form	Supplied at 1.0mg/mL in phosphate buffered saline (without Mg ²⁺ and Ca ²⁺), pH 7.4, 150mM NaCl, 0.02% sodium azide and 50% glycerol.
Purification Method	Antibodies were produced by immunizing rabbits with synthetic peptide and KLH conjugates. Antibodies were purified by affinity-chromatography using epitope-specific peptide.
Clonality	Polyclonal
Alias	SLEB11
Product Type	Polyclonal Antibody
Immunogen Species	Homo sapiens (Human)
Target Names	STAT4

Image



Western blot analysis of extracts from HeLa, A431 and JK cells using STAT4(Ab-693) Antibody.



Immunohistochemical analysis of paraffin-embedded human breast carcinoma tissue using STAT4(Ab-693) Antibody(left) or the same antibody preincubated with blocking peptide(right).

Usage

For Research Use Only. Not for use in diagnostic or therapeutic procedures.