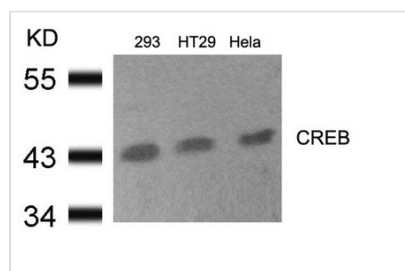




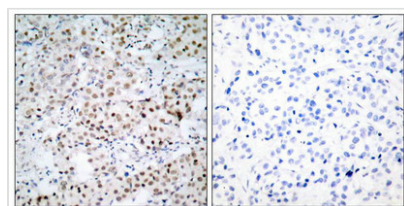
CREB1 (Ab-133) Antibody

Product Code	CSB-PA202670
Storage	Upon receipt, store at -20°C or -80°C. Avoid repeated freeze.
Uniprot No.	P16220
Immunogen	Peptide sequence around aa. 131~135 (R-P-S-Y-R) derived from Human CREB.
Raised In	Rabbit
Species Reactivity	Human,Mouse,Rat
Specificity	The antibody detects endogenous level of total CREB protein and it also detects the CREB-related protein ATF-1.
Tested Applications	ELISA,WB,IHC;WB:1:500-1:1000,IHC:1:50-1:200
Form	Supplied at 1.0mg/mL in phosphate buffered saline (without Mg ²⁺ and Ca ²⁺), pH 7.4, 150mM NaCl, 0.02% sodium azide and 50% glycerol.
Purification Method	Antibodies were produced by immunizing rabbits with synthetic peptide and KLH conjugates. Antibodies were purified by affinity-chromatography using epitope-specific peptide.
Clonality	Polyclonal
Alias	CREB-1; CREB1;
Product Type	Polyclonal Antibody
Immunogen Species	Homo sapiens (Human)
Target Names	CREB1

Image



Western blot analysis of extracts from 293, HT29 and HeLa cells using CREB(Ab-133) Antibody.



Immunohistochemical analysis of paraffin-embedded human breast carcinoma tissue using CREB(Ab-133) Antibody(left) or the same antibody preincubated with blocking peptide(right).

Usage

For Research Use Only. Not for use in diagnostic or therapeutic procedures.