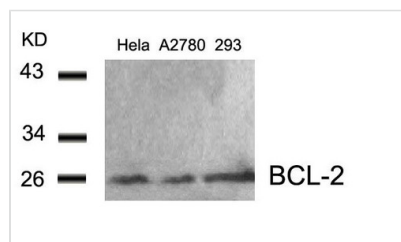




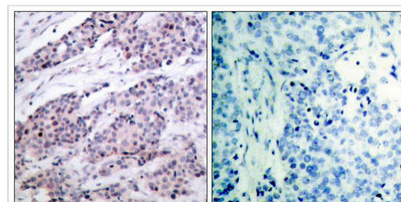
BCL2 (Ab-56) Antibody

Product Code	CSB-PA187601
Storage	Upon receipt, store at -20°C or -80°C. Avoid repeated freeze.
Uniprot No.	P10415
Immunogen	Peptide sequence around aa. 54~58 (G-H-T-P-H) derived from Human BCL-2.
Raised In	Rabbit
Species Reactivity	Human
Specificity	The antibody detects endogenous level of total BCL-2 protein.
Tested Applications	ELISA,WB,IHC,IF;WB:1:500-1:1000,IHC:1:50-1:200,IF:1:100-1:200
Form	Supplied at 1.0mg/mL in phosphate buffered saline (without Mg ²⁺ and Ca ²⁺), pH 7.4, 150mM NaCl, 0.02% sodium azide and 50% glycerol.
Purification Method	Antibodies were produced by immunizing rabbits with synthetic peptide and KLH conjugates. Antibodies were purified by affinity-chromatography using epitope-specific peptide.
Clonality	Polyclonal
Alias	BCL2
Product Type	Polyclonal Antibody
Immunogen Species	Homo sapiens (Human)
Target Names	BCL2

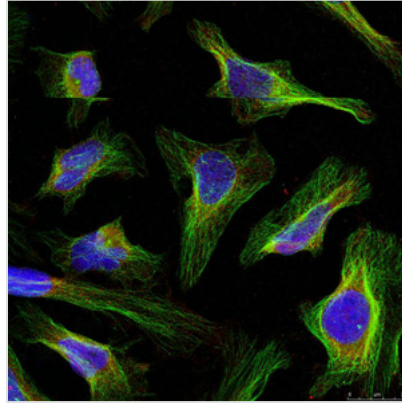
Image



Western blot analysis of extracts from HeLa, A2780 and 293 cells using BCL-2(Ab-56) Antibody.



Immunohistochemical analysis of paraffin-embedded human breast carcinoma tissue using BCL-2(Ab-56) Antibody(left) or the same antibody preincubated with blocking peptide(right).



Immunofluorescence staining of methanol-fixed HeLa cells using BCL-2(Ab-56) Antibody.