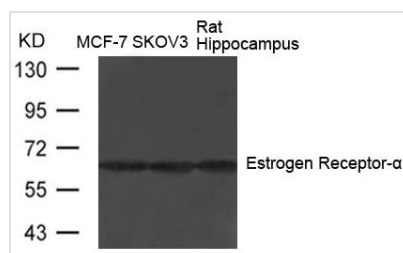




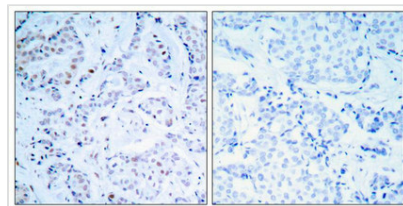
ESR1 (Ab-104) Antibody

Product Code	CSB-PA569446
Storage	Upon receipt, store at -20°C or -80°C. Avoid repeated freeze.
Uniprot No.	P03372
Immunogen	Peptide sequence around aa.102~106 (S-V-S-P-S) derived from Human Estrogen Receptor-α.
Raised In	Rabbit
Species Reactivity	Human, Mouse
Specificity	The antibody detects endogenous level of total Estrogen Receptor-α protein.
Tested Applications	ELISA, WB, IHC; WB: 1:500-1:1000, IHC: 1:50-1:200
Form	Supplied at 1.0mg/mL in phosphate buffered saline (without Mg ²⁺ and Ca ²⁺), pH 7.4, 150mM NaCl, 0.02% sodium azide and 50% glycerol.
Purification Method	Antibodies were produced by immunizing rabbits with synthetic peptide and KLH conjugates. Antibodies were purified by affinity-chromatography using epitope-specific peptide.
Clonality	Polyclonal
Alias	ER; ESR; ESR1; ESTR; ESTRA
Product Type	Polyclonal Antibody
Immunogen Species	Homo sapiens (Human)
Target Names	ESR1

Image



Western blot analysis of extracts from MCF-7



Immunohistochemical analysis of paraffin-embedded human breast carcinoma tissue using Estrogen Receptor-α (Ab-104) Antibody (left) or the same antibody preincubated with blocking peptide (right).