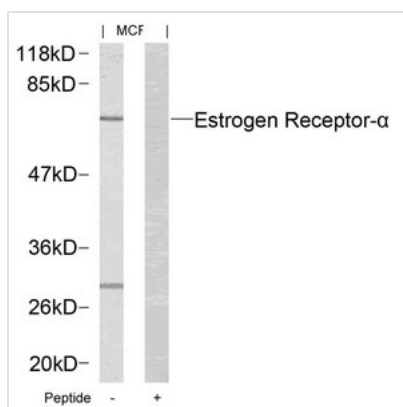




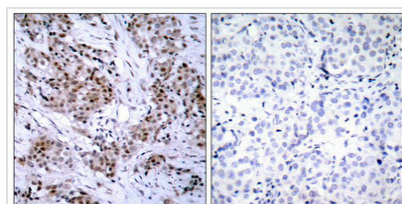
ESR1 (Ab-167) Antibody

Product Code	CSB-PA956111
Storage	Upon receipt, store at -20°C or -80°C. Avoid repeated freeze.
Uniprot No.	P03372
Immunogen	Peptide sequence around aa.165~169 (L-A-S-T-N) derived from Human Estrogen Receptor-a.
Raised In	Rabbit
Species Reactivity	Human,Mouse
Specificity	The antibody detects endogenous level of total Estrogen Receptor-a protein.
Tested Applications	ELISA,WB,IHC,IF;WB:1:500-1:1000,IHC:1:50-1:200,IF:1:100-1:200
Form	Supplied at 1.0mg/mL in phosphate buffered saline (without Mg ²⁺ and Ca ²⁺), pH 7.4, 150mM NaCl, 0.02% sodium azide and 50% glycerol.
Purification Method	Antibodies were produced by immunizing rabbits with synthetic peptide and KLH conjugates. Antibodies were purified by affinity-chromatography using epitope-specific peptide.
Clonality	Polyclonal
Alias	ER; ESR; ESR1; ESTR; ESTRA
Product Type	Polyclonal Antibody
Immunogen Species	Homo sapiens (Human)
Target Names	ESR1

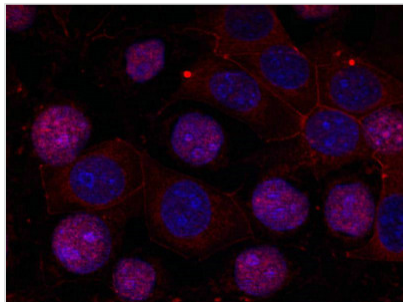
Image



Western blot analysis of extracts from MCF cells using Estrogen Receptor-a(Ab-167) Antibody and the same antibody preincubated with blocking peptide.



Immunohistochemical analysis of paraffin-embedded human breast carcinoma tissue using Estrogen Receptor-a(Ab-167) Antibody(left) or the same antibody preincubated with blocking peptide(right).



Immunofluorescence staining of methanol-fixed MCF cells using Estrogen Receptor-a(Ab-167) Antibody.

Usage

For Research Use Only. Not for use in diagnostic or therapeutic procedures.