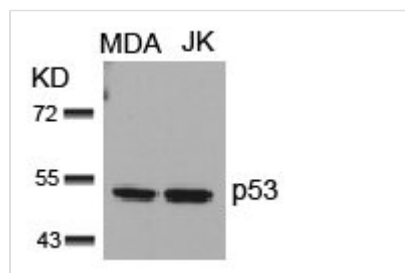




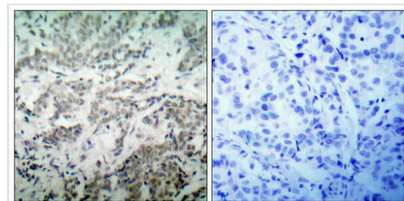
# TP53 (Ab-15) Antibody

<b>Product Code</b>	CSB-PA063047
<b>Storage</b>	Upon receipt, store at -20°C or -80°C. Avoid repeated freeze.
<b>Uniprot No.</b>	P04637
<b>Immunogen</b>	Peptide sequence around aa.13~17 (P-L-S-Q-E) derived from Human p53.
<b>Raised In</b>	Rabbit
<b>Species Reactivity</b>	Human
<b>Specificity</b>	The antibody detects endogenous level of total p53 protein.
<b>Tested Applications</b>	ELISA,WB,IHC,IF;WB:1:500-1:1000,IHC:1:50-1:200,IF:1:100-1:200
<b>Form</b>	Supplied at 1.0mg/mL in phosphate buffered saline (without Mg <sup>2+</sup> and Ca <sup>2+</sup> ), pH 7.4, 150mM NaCl, 0.02% sodium azide and 50% glycerol.
<b>Purification Method</b>	Antibodies were produced by immunizing rabbits with synthetic peptide and KLH conjugates. Antibodies were purified by affinity-chromatography using epitope-specific peptide.
<b>Clonality</b>	Polyclonal
<b>Alias</b>	Tumor suppressor p53; Phosphoprotein p53; Antigen NY-CO-13; TP53;
<b>Product Type</b>	Polyclonal Antibody
<b>Immunogen Species</b>	Homo sapiens (Human)
<b>Target Names</b>	TP53

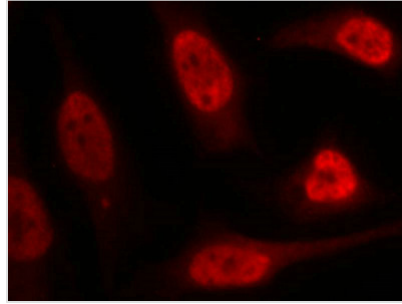
## Image



Western blot analysis of extracts from MDA and JK cells using p53(Ab-15) Antibody.



Immunohistochemical analysis of paraffin-embedded human breast carcinoma tissue using p53(Ab-15) Antibody(left) or the same antibody preincubated with blocking peptide(right).



Immunofluorescence staining of methanol-fixed HeLa cells using p53(Ab-15) Antibody.

---

**Usage**

For Research Use Only. Not for use in diagnostic or therapeutic procedures.