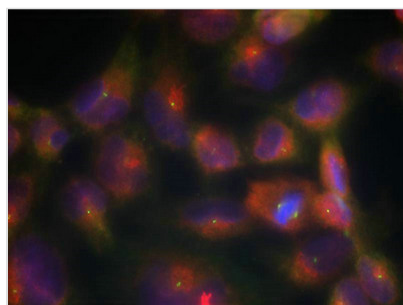




MAPT (Ab-356) Antibody

Product Code	CSB-PA782905
Storage	Upon receipt, store at -20°C or -80°C. Avoid repeated freeze.
Uniprot No.	P10636
Immunogen	Peptide sequence around aa.354~358 (I-G-S-L-D) derived from Human Tau.
Raised In	Rabbit
Species Reactivity	Human,Mouse,Rat
Specificity	The antibody detects endogenous level of total Tau protein.
Tested Applications	ELISA,IF;IF:1:100-1:200
Form	Supplied at 1.0mg/mL in phosphate buffered saline (without Mg ²⁺ and Ca ²⁺), pH 7.4, 150mM NaCl, 0.02% sodium azide and 50% glycerol.
Purification Method	Antibodies were produced by immunizing rabbits with synthetic peptide and KLH conjugates. Antibodies were purified by affinity-chromatography using epitope-specific peptide.
Clonality	Polyclonal
Alias	MAPT; MTAPT; MTBT1; Neurofibrillary tangle protein; PHF-tau
Product Type	Polyclonal Antibody
Immunogen Species	Homo sapiens (Human)
Target Names	MAPT

Image



Immunofluorescence staining of methanol-fixed Hela cells using Tau(Ab-356) Antibody.