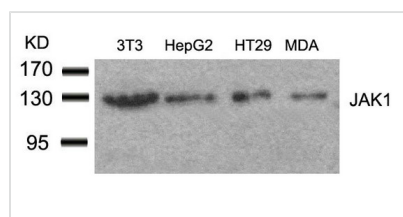




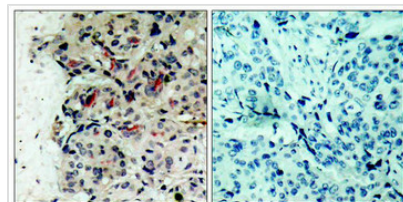
JAK1 (Ab-1022) Antibody

Product Code	CSB-PA800129
Storage	Upon receipt, store at -20°C or -80°C. Avoid repeated freeze.
Uniprot No.	P23458
Immunogen	Peptide sequence around aa. 1020~1024 (K-E-Y-Y-T) derived from Human JAK1.
Raised In	Rabbit
Species Reactivity	Human,Mouse,Rat
Specificity	The antibody detects endogenous level of total JAK1 protein.
Tested Applications	ELISA,WB,IHC;WB:1:500-1:1000,IHC:1:50-1:200
Form	Supplied at 1.0mg/mL in phosphate buffered saline (without Mg ²⁺ and Ca ²⁺), pH 7.4, 150mM NaCl, 0.02% sodium azide and 50% glycerol.
Purification Method	Antibodies were produced by immunizing rabbits with synthetic peptide and KLH conjugates. Antibodies were purified by affinity-chromatography using epitope-specific peptide.
Clonality	Polyclonal
Alias	Janus kinase 1
Product Type	Polyclonal Antibody
Immunogen Species	Homo sapiens (Human)
Target Names	JAK1

Image



Western blot analysis of extracts from 3T3, HepG2, HT29 and MDA cells using JAK1(Ab-1022) Antibody.



Immunohistochemical analysis of paraffin-embedded human breast carcinoma tissue using JAK1(Ab-1022) Antibody(left) or the same antibody preincubated with blocking peptide(right).