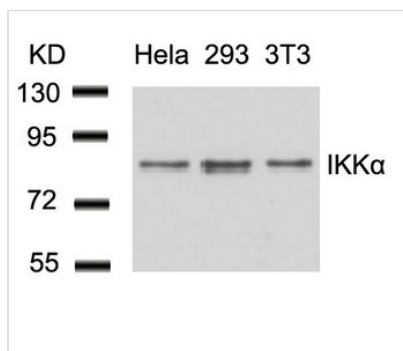




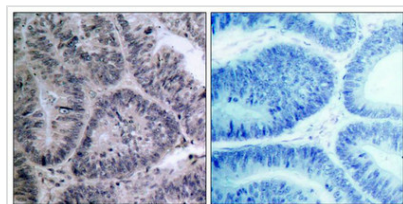
CHUK (Ab-23) Antibody

Product Code	CSB-PA904221
Storage	Upon receipt, store at -20°C or -80°C. Avoid repeated freeze.
Uniprot No.	O15111
Immunogen	Peptide sequence around aa.21~25 (L-G-T-G-G) derived from Human IKK a.
Raised In	Rabbit
Species Reactivity	Human,Mouse,Rat
Specificity	The antibody detects endogenous level of total IKKα protein.
Tested Applications	ELISA,WB,IHC;WB:1:500-1:1000,IHC:1:50-1:200
Form	Supplied at 1.0mg/mL in phosphate buffered saline (without Mg ²⁺ and Ca ²⁺), pH 7.4, 150mM NaCl, 0.02% sodium azide and 50% glycerol.
Purification Method	Antibodies were produced by immunizing rabbits with synthetic peptide and KLH conjugates. Antibodies were purified by affinity-chromatography using epitope-specific peptide.
Clonality	Polyclonal
Alias	I kappa-B kinase alpha; I-kappa-B kinase 1; IKK-A; IKK-alpha; IKK1
Product Type	Polyclonal Antibody
Immunogen Species	Homo sapiens (Human)
Target Names	CHUK

Image



Western blot analysis of extracts from HeLa, 293 and 3T3 cells using IKK α(Ab-23) Antibody.



Immunohistochemical analysis of paraffin-embedded human colon carcinoma tissue using IKK α(Ab-23) Antibody(left) or the same antibody preincubated with blocking peptide(right).

Usage For Research Use Only. Not for use in diagnostic or therapeutic procedures.