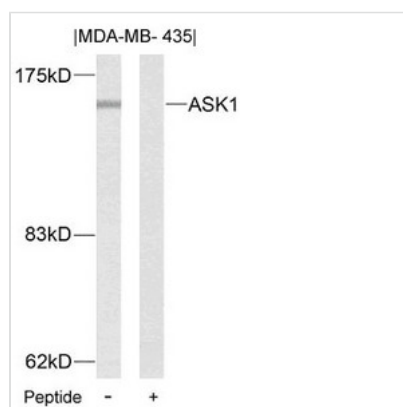




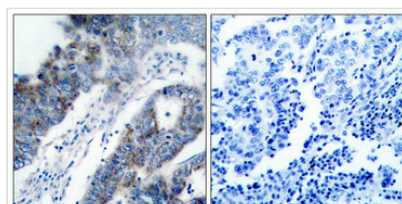
MAP3K5 (Ab-83) Antibody

Product Code	CSB-PA122845
Storage	Upon receipt, store at -20°C or -80°C. Avoid repeated freeze.
Uniprot No.	Q99683
Immunogen	Peptide sequence around aa.81~85 (G-S-S-V-G) derived from Human ASK1.
Raised In	Rabbit
Species Reactivity	Human
Specificity	The antibody detects endogenous level of total ASK1 protein.
Tested Applications	ELISA, WB, IHC, IF; WB:1:500-1:1000, IHC:1:50-1:200, IF:1:100-1:200
Form	Supplied at 1.0mg/mL in phosphate buffered saline (without Mg ²⁺ and Ca ²⁺), pH 7.4, 150mM NaCl, 0.02% sodium azide and 50% glycerol.
Purification Method	Antibodies were produced by immunizing rabbits with synthetic peptide and KLH conjugates. Antibodies were purified by affinity-chromatography using epitope-specific peptide.
Clonality	Polyclonal
Alias	ASK-1; M3K5; MAP3K5; MAPK/ERK kinase kinase 5; MAPKKK5
Product Type	Polyclonal Antibody
Immunogen Species	Homo sapiens (Human)
Target Names	MAP3K5

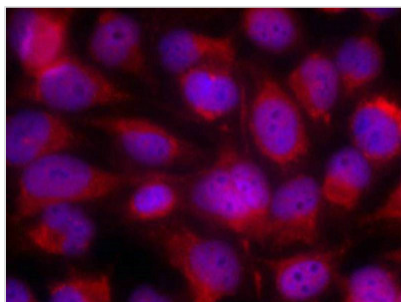
Image



Western blot analysis of extracts from MDA-MB-435 cells using ASK1(Ab-83) Antibody and the same antibody preincubated with blocking peptide.



Immunohistochemical analysis of paraffin-embedded human breast carcinoma tissue using ASK1(Ab-83) Antibody(left) or the same antibody preincubated with blocking peptide(right).



Immunofluorescence staining of methanol-fixed Hela cells using ASK1 (Ab-83) Antibody.