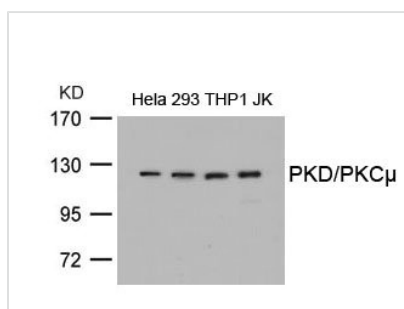




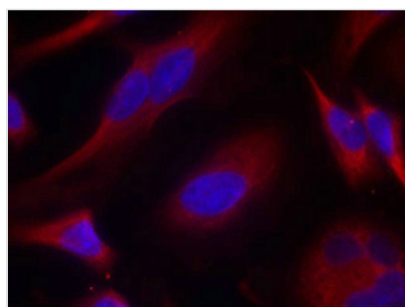
PRKD1 (Ab-738) Antibody

Product Code	CSB-PA589679
Storage	Upon receipt, store at -20°C or -80°C. Avoid repeated freeze.
Uniprot No.	Q15139
Immunogen	Peptide sequence around aa. 736~740 (E-K-S-F-R) derived from Human PKD/PKCm.
Raised In	Rabbit
Species Reactivity	Human,Mouse,Rat
Specificity	The antibody detects endogenous level of total PKD/PKCm protein.
Tested Applications	ELISA,WB,IF;WB:1:500-1:1000,IF:1:100-1:200
Form	Supplied at 1.0mg/mL in phosphate buffered saline (without Mg ²⁺ and Ca ²⁺), pH 7.4, 150mM NaCl, 0.02% sodium azide and 50% glycerol.
Purification Method	Antibodies were produced by immunizing rabbits with synthetic peptide and KLH conjugates. Antibodies were purified by affinity-chromatography using epitope-specific peptide.
Clonality	Polyclonal
Alias	nPKC-D1; Protein kinase D; Protein kinase C mu type; nPKC-mu;
Product Type	Polyclonal Antibody
Immunogen Species	Homo sapiens (Human)
Target Names	PRKD1

Image



Western blot analysis of extracts from HeLa, 293, THP1 and JK cells using PKD/PKCm(Ab-738) Antibody.



Immunofluorescence staining of methanol-fixed HeLa cells using PKD/PKCm(Ab-738) Antibody.

Usage

For Research Use Only. Not for use in diagnostic or therapeutic procedures.