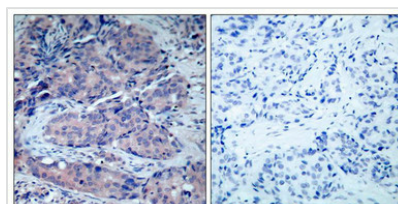




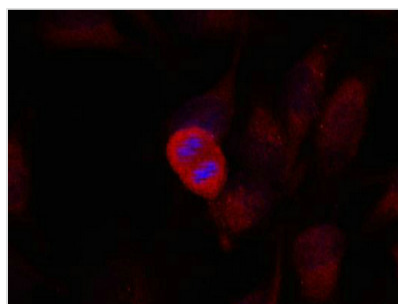
MAP2K4 (Ab-261) Antibody

Product Code	CSB-PA573012
Storage	Upon receipt, store at -20°C or -80°C. Avoid repeated freeze.
Uniprot No.	P45985
Immunogen	Peptide sequence around aa.259~263 (A-K-T-R-D) derived from Human SEK1/MKK4.
Raised In	Rabbit
Species Reactivity	Human,Mouse,Rat
Specificity	The antibody detects endogenous level of total SEK1/MKK4 protein.
Tested Applications	ELISA,IHC,IF;IHC:1:50-1:100,IF:1:100-1:200
Form	Supplied at 1.0mg/mL in phosphate buffered saline (without Mg ²⁺ and Ca ²⁺), pH 7.4, 150mM NaCl, 0.02% sodium azide and 50% glycerol.
Purification Method	Antibodies were produced by immunizing rabbits with synthetic peptide and KLH conjugates. Antibodies were purified by affinity-chromatography using epitope-specific peptide.
Clonality	Polyclonal
Alias	JNKK; JNKK1; MAP2K4; MAPK/ERK kinase 4; MAPKK 4
Product Type	Polyclonal Antibody
Immunogen Species	Homo sapiens (Human)
Target Names	MAP2K4

Image



Immunohistochemical analysis of paraffin-embedded human breast carcinoma tissue using SEK1/MKK4(Ab-261) Antibody(left) or the same antibody preincubated with blocking peptide(right).



Immunofluorescence staining of methanol-fixed HeLa cells using SEK1/MKK4(Ab-261) Antibody.

Usage For Research Use Only. Not for use in diagnostic or therapeutic procedures.