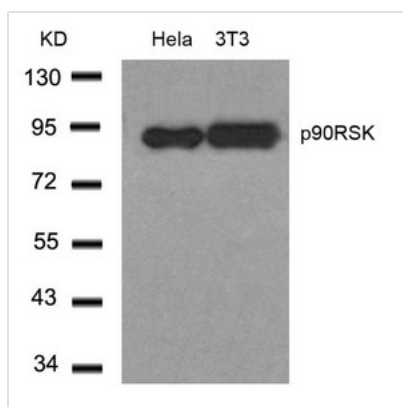




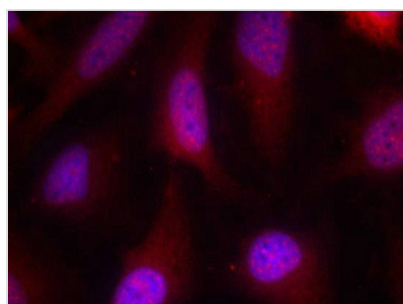
RPS6KA1 (Ab-348) Antibody

| | |
|----------------------------|---|
| Product Code | CSB-PA990220 |
| Storage | Upon receipt, store at -20°C or -80°C. Avoid repeated freeze. |
| Uniprot No. | Q15418 |
| Immunogen | Peptide sequence around aa.346~350 (S-R-T-P-R) derived from Human p90RSK. |
| Raised In | Rabbit |
| Species Reactivity | Human,Mouse,Rat |
| Specificity | The antibody detects endogenous level of total p90RSK protein. |
| Tested Applications | ELISA,WB,IF;WB:1:500-1:1000,IF:1:100-1:200 |
| Form | Supplied at 1.0mg/mL in phosphate buffered saline (without Mg ²⁺ and Ca ²⁺), pH 7.4, 150mM NaCl, 0.02% sodium azide and 50% glycerol. |
| Purification Method | Antibodies were produced by immunizing rabbits with synthetic peptide and KLH conjugates. Antibodies were purified by affinity-chromatography using epitope-specific peptide. |
| Clonality | Polyclonal |
| Alias | KS6A1; MAPKAP-K1a; RPS6KA1; RSK-1; RSK1 |
| Product Type | Polyclonal Antibody |
| Immunogen Species | Homo sapiens (Human) |
| Target Names | RPS6KA1 |

Image



Western blot analysis of extracts from HeLa and 3T3 cells using p90RSK(Ab-348) Antibody.



Immunofluorescence staining of methanol-fixed HeLa cells using p90RSK(Ab-348) Antibody.



Usage

For Research Use Only. Not for use in diagnostic or therapeutic procedures.