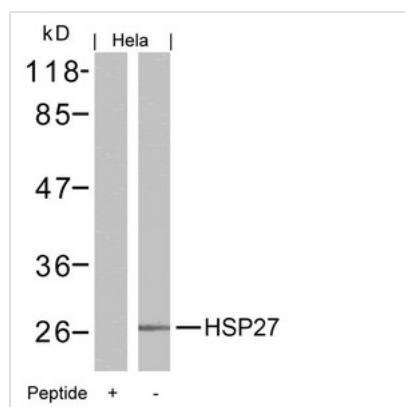




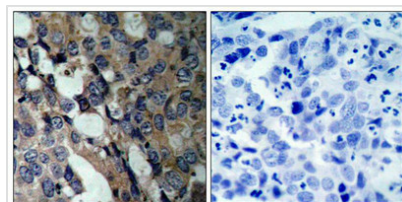
HSPB1 (Ab-15) Antibody

Product Code	CSB-PA068037
Storage	Upon receipt, store at -20°C or -80°C. Avoid repeated freeze.
Uniprot No.	P04792
Immunogen	Peptide sequence around aa.13~17 (G-P-S-W-D) derived from Human HSP27.
Raised In	Rabbit
Species Reactivity	Human
Specificity	The antibody detects endogenous level of total HSP27 protein.
Tested Applications	ELISA,WB,IHC;WB:1:500-1:1000,IHC:1:50-1:200
Form	Supplied at 1.0mg/mL in phosphate buffered saline (without Mg ²⁺ and Ca ²⁺), pH 7.4, 150mM NaCl, 0.02% sodium azide and 50% glycerol.
Purification Method	Antibodies were produced by immunizing rabbits with synthetic peptide and KLH conjugates. Antibodies were purified by affinity-chromatography using epitope-specific peptide.
Clonality	Polyclonal
Alias	28 kDa heat shock protein; Estrogen-regulated 24 kDa protein; Growth-related 25 kDa protein; HSP 27; HSP25
Product Type	Polyclonal Antibody
Immunogen Species	Homo sapiens (Human)
Target Names	HSPB1

Image



Western blot analysis of extracts from HeLa cells using HSP27(Ab-15) Antibody and the same antibody preincubated with blocking peptide.



Immunohistochemical analysis of paraffin-embedded human breast carcinoma tissue using HSP27(Ab-15) Antibody(left) or the same antibody preincubated with blocking peptide(right).