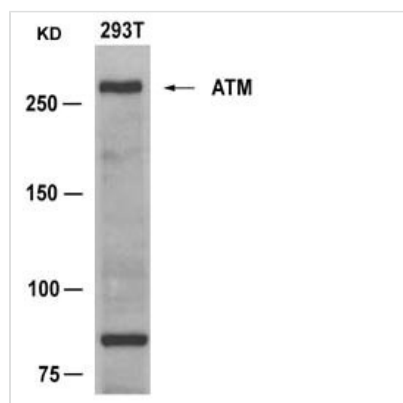




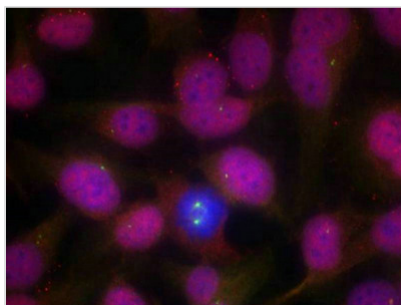
ATM (Ab-1981) Antibody

Product Code	CSB-PA272996
Storage	Upon receipt, store at -20°C or -80°C. Avoid repeated freeze.
Uniprot No.	Q13315
Immunogen	Peptide sequence around aa.1979~1983 (E-G-S-Q-S) derived from Human ATM.
Raised In	Rabbit
Species Reactivity	Human,Mouse
Specificity	The antibody detects endogenous level of total ATM protein.
Tested Applications	ELISA,WB,IF;WB:1:500-1:1000,IF:1:100-1:200
Form	Supplied at 1.0mg/mL in phosphate buffered saline (without Mg ²⁺ and Ca ²⁺), pH 7.4, 150mM NaCl, 0.02% sodium azide and 50% glycerol.
Purification Method	Antibodies were produced by immunizing rabbits with synthetic peptide and KLH conjugates. Antibodies were purified by affinity-chromatography using epitope-specific peptide.
Clonality	Polyclonal
Alias	Ataxia telangiectasia mutated homolog; Ataxia telangiectasia mutated; kinase ATM
Product Type	Polyclonal Antibody
Immunogen Species	Homo sapiens (Human)
Target Names	ATM

Image



Western blot analysis of extracts from 293T cells using ATM(Ab-1981) Antibody and the same antibody preincubated with blocking peptide.



Immunofluorescence staining of methanol-fixed Hela cells using ATM(Ab-1981) Antibody.