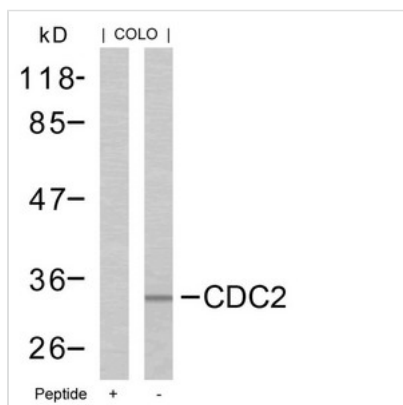




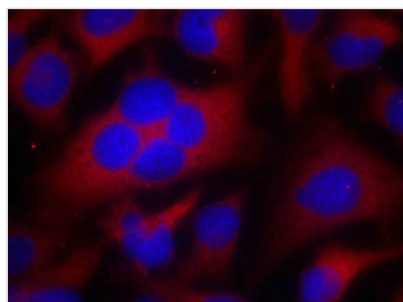
CDK1 (Ab-161) Antibody

| | |
|----------------------------|---|
| Product Code | CSB-PA139800 |
| Storage | Upon receipt, store at -20°C or -80°C. Avoid repeated freeze. |
| Uniprot No. | P06493 |
| Immunogen | Peptide sequence around aa.159~163 (T-Y-T-H-E) derived from Human CDC2. |
| Raised In | Rabbit |
| Species Reactivity | Human,Mouse,Rat |
| Specificity | The antibody detects endogenous level of total CDC2 protein. |
| Tested Applications | ELISA,WB,IF;WB:1:500-1:1000,IF:1:100-1:200 |
| Form | Supplied at 1.0mg/mL in phosphate buffered saline (without Mg ²⁺ and Ca ²⁺), pH 7.4, 150mM NaCl, 0.02% sodium azide and 50% glycerol. |
| Purification Method | Antibodies were produced by immunizing rabbits with synthetic peptide and KLH conjugates. Antibodies were purified by affinity-chromatography using epitope-specific peptide. |
| Clonality | Polyclonal |
| Alias | CDC28; CDC2A; CDK1; Cyclin-dependent kinase 1; |
| Product Type | Polyclonal Antibody |
| Immunogen Species | Homo sapiens (Human) |
| Target Names | CDK1 |

Image



Western blot analysis of extracts from COLO cells using CDC2(Ab-161) Antibody and the same antibody preincubated with blocking peptide.



Immunofluorescence staining of methanol-fixed HeLa cells using CDC2(Ab-161) Antibody.



Usage

For Research Use Only. Not for use in diagnostic or therapeutic procedures.