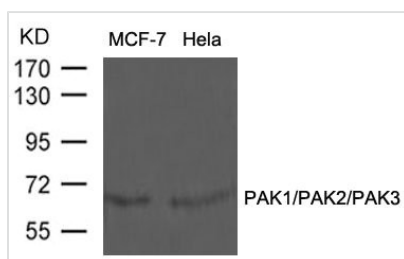




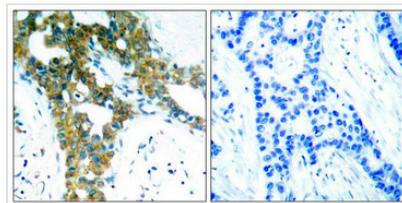
PAK1/PAK2/PAK3 (Ab-423/402/421) Antibody

Product Code	CSB-PA583804
Storage	Upon receipt, store at -20°C or -80°C. Avoid repeated freeze.
Uniprot No.	Q13153
Immunogen	Peptide sequence around aa.421~425/400~404/419~423 (R-S-T-M-V) derived from Human PAK1/PAK2/PAK3.
Raised In	Rabbit
Species Reactivity	Human,Mouse,Rat
Specificity	The antibody detects endogenous level of total PAK1/PAK2/PAK3 protein.
Tested Applications	ELISA,WB,IHC,IF;WB:1:500-1:1000,IHC:1:50-1:200,IF:1:100-1:200
Form	Supplied at 1.0mg/mL in phosphate buffered saline (without Mg ²⁺ and Ca ²⁺), pH 7.4, 150mM NaCl, 0.02% sodium azide and 50% glycerol.
Purification Method	Antibodies were produced by immunizing rabbits with synthetic peptide and KLH conjugates. Antibodies were purified by affinity-chromatography using epitope-specific peptide.
Clonality	Polyclonal
Alias	p21-activated kinase 1; PAK-1; p65-PAK; Alpha-PAK;
Product Type	Polyclonal Antibody
Immunogen Species	Homo sapiens (Human)
Target Names	PAK1/PAK2/PAK3

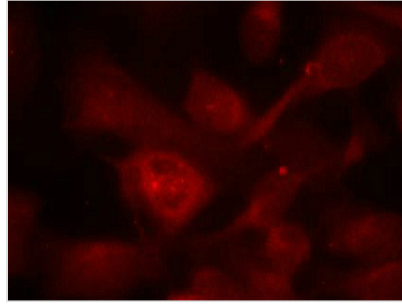
Image



Western blot analysis of extracts from MCF-7 and HeLa cells using PAK1/PAK2/PAK3(Ab-423/402/421) Antibody.



Immunohistochemical analysis of paraffin-embedded human breast carcinoma tissue using PAK1/PAK2/PAK3(Ab-423/402/421) Antibody(left) or the same antibody preincubated with blocking peptide(right).



Immunofluorescence staining of methanol-fixed HeLa cells using PAK1/PAK2/PAK3(Ab-423/402/421) Antibody.

Usage

For Research Use Only. Not for use in diagnostic or therapeutic procedures.