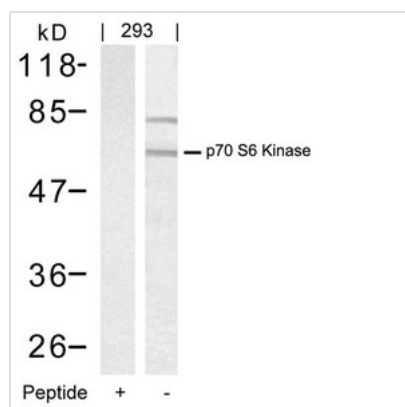




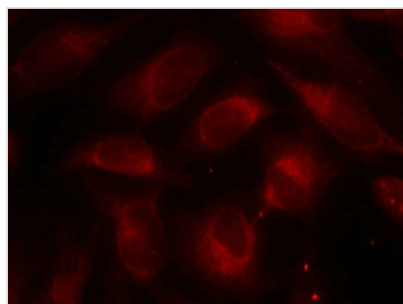
RPS6KB1 (Ab-389) Antibody

Product Code	CSB-PA204361
Storage	Upon receipt, store at -20°C or -80°C. Avoid repeated freeze.
Uniprot No.	P23443
Immunogen	Peptide sequence around aa.387~391 (G-F-T-Y-V) derived from Human p70 S6 Kinase.
Raised In	Rabbit
Species Reactivity	Human,Mouse,Rat
Specificity	The antibody detects endogenous level of total p70 S6 Kinase protein.
Tested Applications	ELISA,WB,IF;WB:1:500-1:1000,IF:1:100-1:200
Form	Supplied at 1.0mg/mL in phosphate buffered saline (without Mg2+ and Ca2+), pH 7.4, 150mM NaCl, 0.02% sodium azide and 50% glycerol.
Purification Method	Antibodies were produced by immunizing rabbits with synthetic peptide and KLH conjugates. Antibodies were purified by affinity-chromatography using epitope-specific peptide.
Clonality	Polyclonal
Alias	KS6B1; P70-S6K; RPS6KB1; S6K;
Product Type	Polyclonal Antibody
Immunogen Species	Homo sapiens (Human)
Target Names	RPS6KB1

Image



Western blot analysis of extracts from 293 cells using p70 S6 Kinase(Ab-389) Antibody(Lane 2) and the same antibody preincubated with blocking peptide(Lane1).



Immunofluorescence staining of methanol-fixed HeLa cells using p70 S6 Kinase(Ab-389) Antibody.

