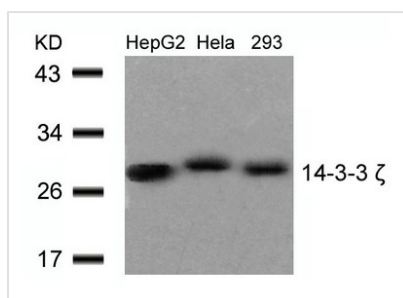




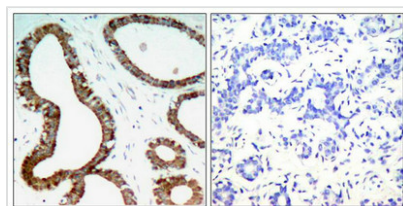
YWHAZ (Ab-58) Antibody

| | |
|----------------------------|---|
| Product Code | CSB-PA985974 |
| Storage | Upon receipt, store at -20°C or -80°C. Avoid repeated freeze. |
| Uniprot No. | P63104 |
| Immunogen | Peptide sequence around aa.56~60 (R-S-S-W-R) derived from Human 14-3-3 zeta. |
| Raised In | Rabbit |
| Species Reactivity | Human,Mouse,Rat |
| Specificity | The antibody detects endogenous level of total 14-3-3 z protein. |
| Tested Applications | ELISA,WB,IHC;WB:1:500-1:1000,IHC:1:50-1:200 |
| Form | Supplied at 1.0mg/mL in phosphate buffered saline (without Mg ²⁺ and Ca ²⁺), pH 7.4, 150mM NaCl, 0.02% sodium azide and 50% glycerol. |
| Purification Method | Antibodies were produced by immunizing rabbits with synthetic peptide and KLH conjugates. Antibodies were purified by affinity-chromatography using epitope-specific peptide. |
| Clonality | Polyclonal |
| Alias | 1433Z; 143Z; FAS; Factor activating exoenzyme S; KCIP-1 |
| Product Type | Polyclonal Antibody |
| Immunogen Species | Homo sapiens (Human) |
| Target Names | YWHAZ |

Image



Western blot analysis of extracts from HepG2 , HeLa and 293 cells using 14-3-3z(Ab-58) Antibody.



Immunohistochemical analysis of paraffin-embedded human breast carcinoma tissue using 14-3-3z(Ab-58) Antibody(left) or the same antibody preincubated with blocking peptide(right).

Usage

For Research Use Only. Not for use in diagnostic or therapeutic procedures.