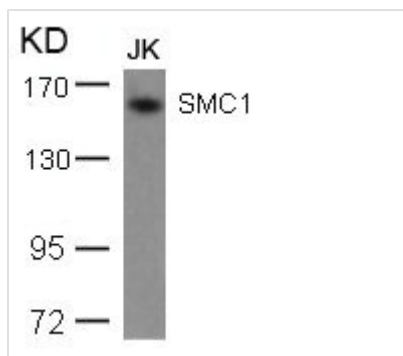




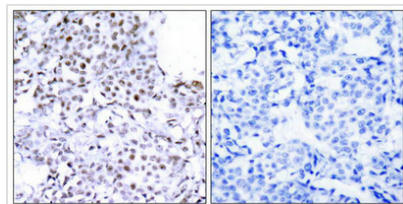
SMC1A (Ab-957) Antibody

Product Code	CSB-PA775738
Storage	Upon receipt, store at -20°C or -80°C. Avoid repeated freeze.
Uniprot No.	Q14683
Immunogen	Peptide sequence around aa. 955~959 (G-S-S-Q-G) derived from Human SMC1.
Raised In	Rabbit
Species Reactivity	Human,Mouse
Specificity	The antibody detects endogenous level of total SMC1 protein.
Tested Applications	ELISA,WB,IHC;WB:1:500-1:1000,IHC:1:50-1:200
Form	Supplied at 1.0mg/mL in phosphate buffered saline (without Mg ²⁺ and Ca ²⁺), pH 7.4, 150mM NaCl, 0.02% sodium azide and 50% glycerol.
Purification Method	Antibodies were produced by immunizing rabbits with synthetic peptide and KLH conjugates. Antibodies were purified by affinity-chromatography using epitope-specific peptide.
Clonality	Polyclonal
Alias	SM1A; SMC1A; SMC1L1; SMC1 alpha protein;
Product Type	Polyclonal Antibody
Immunogen Species	Homo sapiens (Human)
Target Names	SMC1A

Image



Western blot analysis of extracts from JK cells using SMC1(Ab-957) Antibody.



Immunohistochemical analysis of paraffin-embedded human breast carcinoma tissue using SMC1(Ab-957) Antibody(left) or the same antibody preincubated with blocking peptide(right).