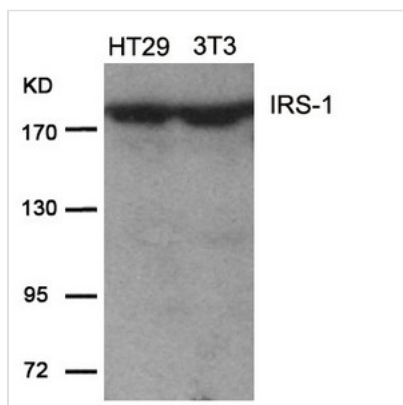




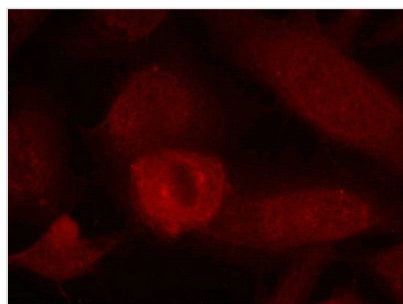
IRS1 (Ab-639) Antibody

Product Code	CSB-PA195027
Storage	Upon receipt, store at -20°C or -80°C. Avoid repeated freeze.
Uniprot No.	P35568
Immunogen	Peptide sequence around aa.637~641 (P-K-S-V-S) derived from Human IRS-1.
Raised In	Rabbit
Species Reactivity	Human,Mouse,Rat
Specificity	The antibody detects endogenous level of total IRS-1 protein.
Tested Applications	ELISA,WB,IF;WB:1:500-1:1000,IF:1:100-1:200
Form	Supplied at 1.0mg/mL in phosphate buffered saline (without Mg ²⁺ and Ca ²⁺), pH 7.4, 150mM NaCl, 0.02% sodium azide and 50% glycerol.
Purification Method	Antibodies were produced by immunizing rabbits with synthetic peptide and KLH conjugates. Antibodies were purified by affinity-chromatography using epitope-specific peptide.
Clonality	Polyclonal
Alias	IRS-1; IRS1;
Product Type	Polyclonal Antibody
Immunogen Species	Homo sapiens (Human)
Target Names	IRS1

Image



Western blot analysis of extracts from HT29 and 3T3 cells using IRS-1(Ab-639) Antibody.



Immunofluorescence staining of methanol-fixed HeLa cells using IRS-1(Ab-639) Antibody.



Usage

For Research Use Only. Not for use in diagnostic or therapeutic procedures.