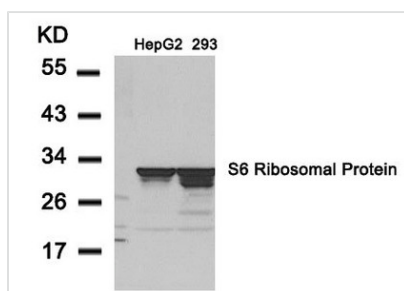




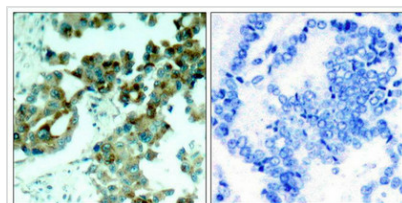
RPS6 (Ab-235) Antibody

Product Code	CSB-PA061819
Storage	Upon receipt, store at -20°C or -80°C. Avoid repeated freeze.
Uniprot No.	P62753
Immunogen	Peptide sequence around aa. 233~237 (R-L-S-S-L) derived from Human S6 Ribosomal Protein.
Raised In	Rabbit
Species Reactivity	Human,Mouse,Rat
Specificity	The antibody detects endogenous level of total S6 Ribosomal protein.
Tested Applications	ELISA,WB,IHC,IF;WB:1:500-1:1000,IHC:1:50-1:200,IF:1:100-1:200
Form	Supplied at 1.0mg/mL in phosphate buffered saline (without Mg ²⁺ and Ca ²⁺), pH 7.4, 150mM NaCl, 0.02% sodium azide and 50% glycerol.
Purification Method	Antibodies were produced by immunizing rabbits with synthetic peptide and KLH conjugates. Antibodies were purified by affinity-chromatography using epitope-specific peptide.
Clonality	Polyclonal
Alias	NP33; RPS6; RS6
Product Type	Polyclonal Antibody
Immunogen Species	Homo sapiens (Human)
Target Names	RPS6

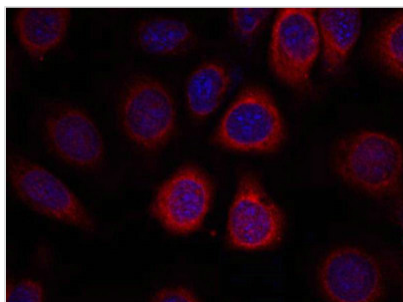
Image



Western blot analysis of extracts from HepG2 and 293 cells using S6 Ribosomal Protein(Ab-235) Antibody.



Immunohistochemical analysis of paraffin-embedded human lung carcinoma tissue using S6 Ribosomal Protein(Ab-235) Antibody(left) or the same antibody preincubated with blocking peptide(right).



Immunofluorescence staining of methanol-fixed MCF7 cells using S6 Ribosomal Protein(Ab-235) Antibody.

Usage

For Research Use Only. Not for use in diagnostic or therapeutic procedures.