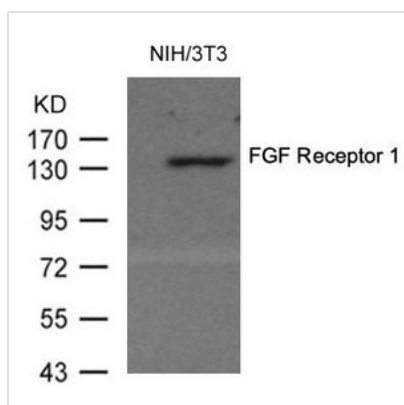




MET (Ab-154) Antibody

Product Code	CSB-PA267782
Storage	Upon receipt, store at -20°C or -80°C. Avoid repeated freeze.
Uniprot No.	P08581
Immunogen	Peptide sequence around aa.152~156 (A-P-Y-W-T) derived from Human FGF Receptor 1.
Raised In	Rabbit
Species Reactivity	Human,Mouse,Rat
Specificity	The antibody detects endogenous level of total FGF Receptor 1 protein.
Tested Applications	ELISA,WB;WB:1:500-1:1000
Form	Supplied at 1.0mg/mL in phosphate buffered saline (without Mg ²⁺ and Ca ²⁺), pH 7.4, 150mM NaCl, 0.02% sodium azide and 50% glycerol.
Purification Method	Antibodies were produced by immunizing rabbits with synthetic peptide and KLH conjugates. Antibodies were purified by affinity-chromatography using epitope-specific peptide.
Clonality	Polyclonal
Alias	FGFBR; FGFR-1; FGR1; FLG; FLT2
Product Type	Polyclonal Antibody
Immunogen Species	Homo sapiens (Human)
Target Names	MET

Image



Western blot analysis of extracts from 3T3 cells using FGF Receptor 1 (Ab-154) Antibody and the same antibody preincubated with blocking peptide.

Usage

For Research Use Only. Not for use in diagnostic or therapeutic procedures.