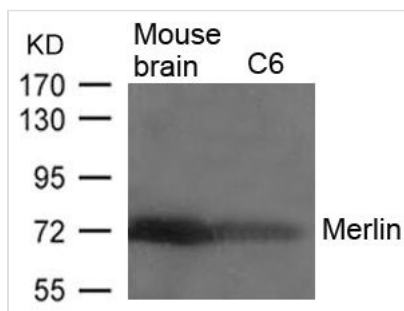




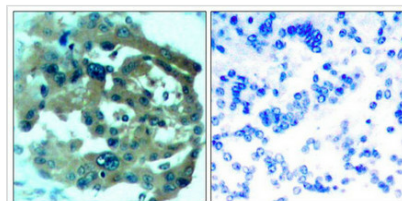
NF2 (Ab-518) Antibody

Product Code	CSB-PA779103
Storage	Upon receipt, store at -20°C or -80°C. Avoid repeated freeze.
Uniprot No.	P35240
Immunogen	Peptide sequence around aa.516~520 (R-L-S-M-E) derived from Human Merlin.
Raised In	Rabbit
Species Reactivity	Human,Mouse,Rat
Specificity	The antibody detects endogenous level of total Merlin protein.
Tested Applications	ELISA,WB,IHC;WB:1:500-1:1000,IHC:1:50-1:200
Form	Supplied at 1.0mg/mL in phosphate buffered saline (without Mg ²⁺ and Ca ²⁺), pH 7.4, 150mM NaCl, 0.02% sodium azide and 50% glycerol.
Purification Method	Antibodies were produced by immunizing rabbits with synthetic peptide and KLH conjugates. Antibodies were purified by affinity-chromatography using epitope-specific peptide.
Clonality	Polyclonal
Alias	MERL; NF2; Neurofibromin 2; SCH; Schwannomerlin
Product Type	Polyclonal Antibody
Immunogen Species	Homo sapiens (Human)
Target Names	NF2

Image



Western blot analysis of extracts from Mouse brain tissue and C6 cells using Merlin(Ab-518) Antibody.



Immunohistochemical analysis of paraffin-embedded human lung carcinoma tissue using Merlin(Ab-518) Antibody (left) or the same antibody preincubated with blocking peptide (right).

Usage

For Research Use Only. Not for use in diagnostic or therapeutic procedures.