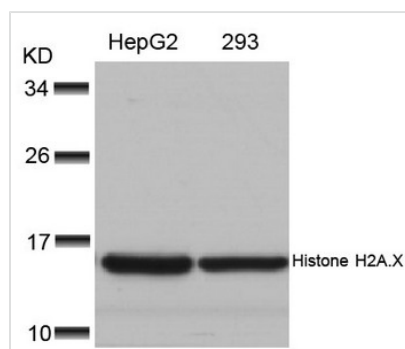




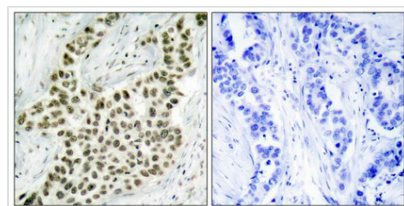
Histone H2A.X (Ab-139) Antibody

Product Code	CSB-PA954201
Storage	Upon receipt, store at -20°C or -80°C. Avoid repeated freeze.
Uniprot No.	P16104
Immunogen	Peptide sequence around aa.137~141 (Q-A-S-Q-E) derived from Human Histone H2A.X.
Raised In	Rabbit
Species Reactivity	Human
Specificity	The antibody detects endogenous level of total Histone H2A.X protein.
Tested Applications	ELISA,WB,IHC,IF;WB:1:500-1:1000,IHC:1:50-1:200,IF:1:100-1:200
Form	Supplied at 1.0mg/mL in phosphate buffered saline (without Mg ²⁺ and Ca ²⁺), pH 7.4, 150mM NaCl, 0.02% sodium azide and 50% glycerol.
Purification Method	Antibodies were produced by immunizing rabbits with synthetic peptide and KLH conjugates. Antibodies were purified by affinity-chromatography using epitope-specific peptide.
Clonality	Polyclonal
Alias	H2A.X; H2AFX; H2a/x; HIST5-2AX;
Product Type	Polyclonal Antibody
Immunogen Species	Homo sapiens (Human)
Target Names	H2AFX

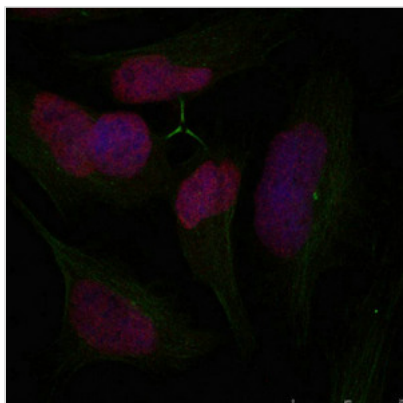
Image



Western blot analysis of extracts from HepG2 and 293 cells using Histone H2A.X(Ab-139) Antibody.



Immunohistochemical analysis of paraffin-embedded human breast carcinoma tissue using Histone H2A.X(Ab-139) Antibody(left) or the same antibody preincubated with blocking peptide(right).



Immunofluorescence staining of methanol-fixed HeLa cells using Histone H2A.X(Ab-139) Antibody.

Usage

For Research Use Only. Not for use in diagnostic or therapeutic procedures.