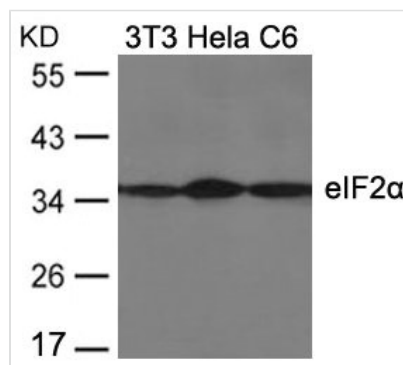




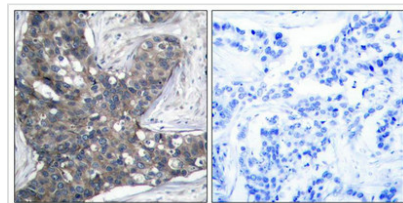
EIF2S1 (Ab-51) Antibody

Product Code	CSB-PA447773
Storage	Upon receipt, store at -20°C or -80°C. Avoid repeated freeze.
Uniprot No.	P05198
Immunogen	Peptide sequence around aa.49~53 (E-L-S-R-R) derived from Human eIF2a.
Raised In	Rabbit
Species Reactivity	Human,Mouse,Rat
Specificity	The antibody detects endogenous level of total eIF2a protein.
Tested Applications	ELISA,WB,IHC,IF;WB:1:500-1:1000,IHC:1:50-1:200,IF:1:100-1:200
Form	Supplied at 1.0mg/mL in phosphate buffered saline (without Mg ²⁺ and Ca ²⁺), pH 7.4, 150mM NaCl, 0.02% sodium azide and 50% glycerol.
Purification Method	Antibodies were produced by immunizing rabbits with synthetic peptide and KLH conjugates. Antibodies were purified by affinity-chromatography using epitope-specific peptide.
Clonality	Polyclonal
Alias	Eukaryotic translation initiation factor 2 subunit alpha; EIF-2A;
Product Type	Polyclonal Antibody
Immunogen Species	Homo sapiens (Human)
Target Names	EIF2S1

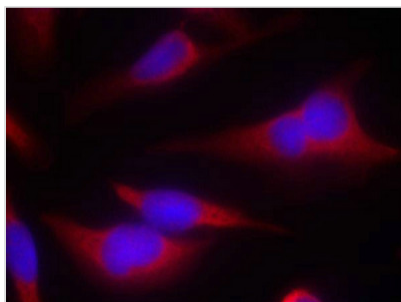
Image



Western blot analysis of extracts from 3T3, HeLa and C6 cells using eIF2a(Ab-51) Antibody.



Immunohistochemical analysis of paraffin-embedded human breast carcinoma tissue using eIF2a(Ab-51) Antibody (left) or the same antibody preincubated with blocking peptide (right).



Immunofluorescence staining of methanol-fixed HeLa cells using eIF2α(Ab-51) Antibody.