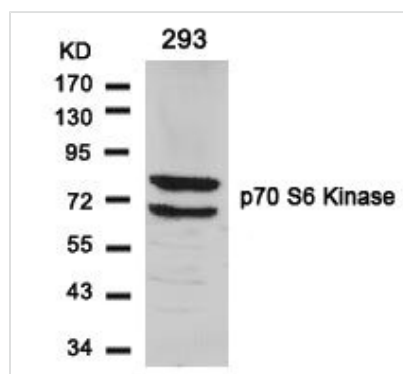




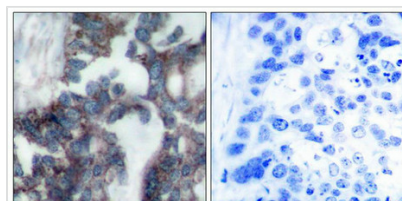
RPS6KB1 (Ab-424) Antibody

Product Code	CSB-PA090473
Storage	Upon receipt, store at -20°C or -80°C. Avoid repeated freeze.
Uniprot No.	P23443
Immunogen	Peptide sequence around aa.422~426 (P-V-S-P-V) derived from Human p70S6k.
Raised In	Rabbit
Species Reactivity	Human,Mouse,Rat
Specificity	The antibody detects endogenous level of total p70 S6 Kinase protein.
Tested Applications	ELISA,WB,IHC,IF;WB:1:500-1:1000,IHC:1:50-1:200,IF:1:100-1:200
Form	Supplied at 1.0mg/mL in phosphate buffered saline (without Mg2+ and Ca2+), pH 7.4, 150mM NaCl, 0.02% sodium azide and 50% glycerol.
Purification Method	Antibodies were produced by immunizing rabbits with synthetic peptide and KLH conjugates. Antibodies were purified by affinity-chromatography using epitope-specific peptide.
Clonality	Polyclonal
Alias	KS6B1; P70-S6K; RPS6KB1; S6K;
Product Type	Polyclonal Antibody
Immunogen Species	Homo sapiens (Human)
Target Names	RPS6KB1

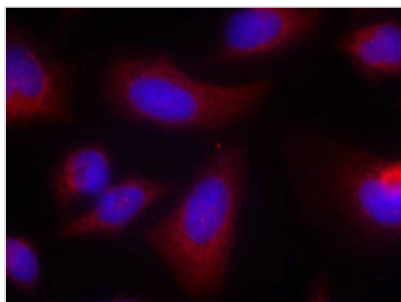
Image



Western blot analysis of extracts from 293 cells using p70 S6 Kinase(Ab-424) Antibody.



Immunohistochemical analysis of paraffin-embedded human breast carcinoma tissue using p70 S6 Kinase(Ab-424) Antibody(left) or the same antibody preincubated with blocking peptide(right).



Immunofluorescence staining of methanol-fixed HeLa cells using p70 S6 Kinase(Ab-424) Antibody.