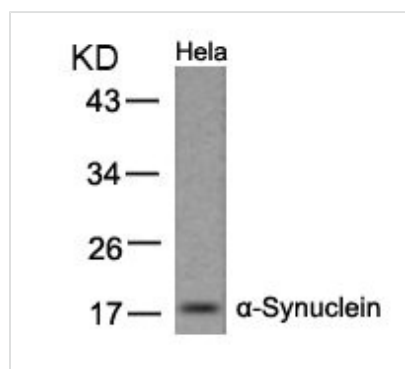




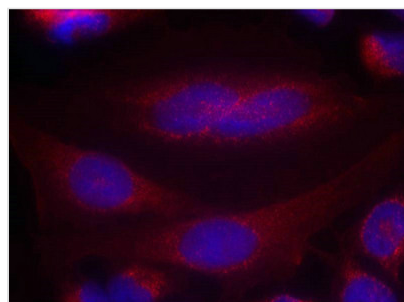
SNCA (Ab-133) Antibody

Product Code	CSB-PA783926
Storage	Upon receipt, store at -20°C or -80°C. Avoid repeated freeze.
Uniprot No.	P37840
Immunogen	Peptide sequence around aa. 131~135 (E-G-Y-Q-D) derived from Human a-Synuclein.
Raised In	Rabbit
Species Reactivity	Human,Mouse,Rat
Specificity	The antibody detects endogenous level of total Synuclein protein.
Tested Applications	ELISA,WB,IF;WB:1:500-1:1000,IF:1:100-1:200
Form	Supplied at 1.0mg/mL in phosphate buffered saline (without Mg2+ and Ca2+), pH 7.4, 150mM NaCl, 0.02% sodium azide and 50% glycerol.
Purification Method	Antibodies were produced by immunizing rabbits with synthetic peptide and KLH conjugates. Antibodies were purified by affinity-chromatography using epitope-specific peptide.
Clonality	Polyclonal
Alias	NACP; SYN; SYUA; alpha-synuclein;
Product Type	Polyclonal Antibody
Immunogen Species	Homo sapiens (Human)
Target Names	SNCA

Image



Western blot analysis of extracts from HeLa cells using a-Synuclein(Ab-133) Antibody.



Immunofluorescence staining of methanol-fixed HeLa cells using a-Synuclein(Ab-133) Antibody.