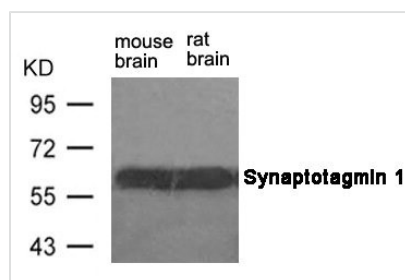




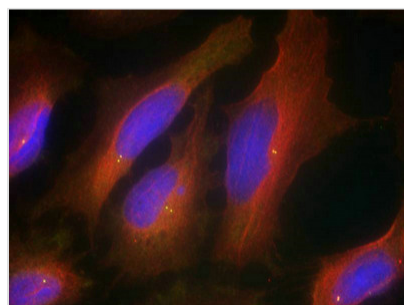
SYT1 (Ab-309) Antibody

Product Code	CSB-PA281028
Storage	Upon receipt, store at -20°C or -80°C. Avoid repeated freeze.
Uniprot No.	P21579
Immunogen	Peptide sequence around aa.307~311 (G-L-S-D-P) derived from Human Synaptotagmin 1.
Raised In	Rabbit
Species Reactivity	Human,Mouse,Rat
Specificity	The antibody detects endogenous level of total Synaptotagmin 1 protein.
Tested Applications	ELISA,WB,IF;WB:1:500-1:1000,IF:1:100-1:200
Form	Supplied at 1.0mg/mL in phosphate buffered saline (without Mg ²⁺ and Ca ²⁺), pH 7.4, 150mM NaCl, 0.02% sodium azide and 50% glycerol.
Purification Method	Antibodies were produced by immunizing rabbits with synthetic peptide and KLH conjugates. Antibodies were purified by affinity-chromatography using epitope-specific peptide.
Clonality	Polyclonal
Alias	SYT1; Syt1; Synaptotagmin I; P65; SYT
Product Type	Polyclonal Antibody
Immunogen Species	Homo sapiens (Human)
Target Names	SYT1

Image



Western blot analysis of extracts from mouse brain and rat brain tissue using Synaptotagmin 1 (Ab-309) Antibody.



Immunofluorescence staining of methanol-fixed HeLa cells using Synaptotagmin 1 (Ab-309) Antibody.

Usage

For Research Use Only. Not for use in diagnostic or therapeutic procedures.