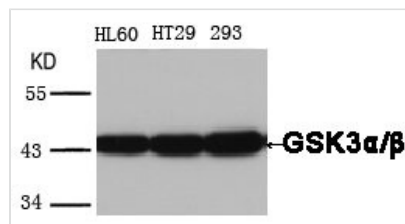




# GSK3A/GSK3B (Ab-279/216) Antibody

<b>Product Code</b>	CSB-PA255909
<b>Storage</b>	Upon receipt, store at -20°C or -80°C. Avoid repeated freeze.
<b>Immunogen</b>	Peptide sequence around aa.277~281/214~218 (V-S-Y-I-C) derived from Human GSK3α/β .
<b>Raised In</b>	Rabbit
<b>Species Reactivity</b>	Human,Mouse,Rat
<b>Specificity</b>	The antibody detects endogenous level of total GSK3α/β protein.
<b>Tested Applications</b>	ELISA,WB;WB:1:500-1:1000
<b>Form</b>	Supplied at 1.0mg/mL in phosphate buffered saline (without Mg <sup>2+</sup> and Ca <sup>2+</sup> ), pH 7.4, 150mM NaCl, 0.02% sodium azide and 50% glycerol.
<b>Purification Method</b>	Antibodies were produced by immunizing rabbits with synthetic peptide and KLH conjugates. Antibodies were purified by affinity-chromatography using epitope-specific peptide.
<b>Clonality</b>	Polyclonal
<b>Alias</b>	Factor A; GSK-3 alpha/beta; kinase GSK3-alpha/beta
<b>Product Type</b>	Polyclonal Antibody
<b>Immunogen Species</b>	Homo sapiens (Human)
<b>Target Names</b>	GSK3A/GSK3B
<b>Accession NO.</b>	Swiss-Prot: P49840/P49841 NCBI Protein: NP_063937.2/NP_001139628.1

## Image



Western blot analysis of extracts from HL60, HT29 and 293 cells using GSK3-α/β(Ab-279/216) Antibody.

## Usage

For Research Use Only. Not for use in diagnostic or therapeutic procedures.